

## Anti-GRK6 Antibody

Catalog Number: A03623-1

### About GRK6

The G protein-coupled receptor kinases (GRKs) are a versatile family of kinases that play a critical role in cancer metastasis through their regulation of G-protein coupled receptors (GPCRs) involved in growth factor mediated cell migration (1,2). Phosphorylation of receptors by GRKs appears to be strictly dependent on the receptor being in its agonist-activated state (1). GRK6 is one of 7 members of the GRK serine/threonine kinase subfamily, which has been shown to modulate the Wnt signaling pathway via phosphorylation of LRP6 (3,4), and the insulin-like growth factor signaling pathway (4). GRK6 may also play a role in immune system function (5).

### Overview

Product Name	Anti-GRK6 Antibody
Reactive Species	Human, Mouse, Rat
Description	Boster Bio Anti-GRK6 Antibody (Catalog # A03623-1). Tested in ELISA, WB, IHC-P, IF applications. This antibody reacts with Human, Mouse, Rat.
Application	ELISA, IF, IHC-P, WB
Clonality	Polyclonal
Formulation	GRK6 antibody is supplied in PBS containing 0.02% sodium azide.
Storage Instructions	GRK6 antibody can be stored at 4°C for three months and -20°C, stable for up to one year.
Host	Rabbit
Uniprot ID	P43250

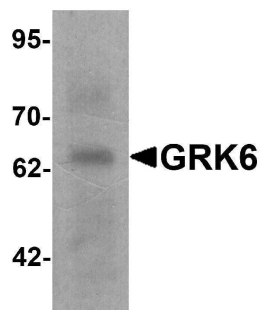
### Technical Details

Immunogen	GRK6 antibody was raised against a 19 amino acid peptide near the carboxy terminus of human GRK6. The immunogen is located within the last 50 amino acids of GRK6.
Predicted Reactive Species	Bovine, Mouse, Rat
Cross Reactivity	GRK6 antibody is human, mouse and rat reactive. Multiple isoforms of GRK6 are known to exist. This antibody is predicted to not cross-react with other members of the GRK protein family.
Isotype	IgG
Form	Liquid
Concentration	1 mg/mL
Purification	GRK6 antibody is affinity chromatography purified via peptide column.

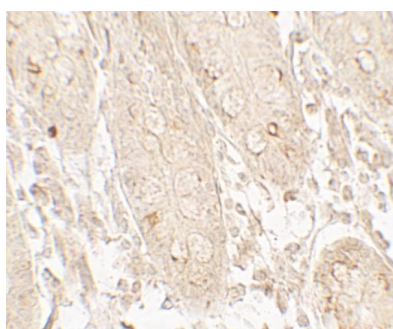
Suggested Dilutions

GRK6 antibody can be used for detection of GRK6 by Western blot at 1 - 2 ug/ml. Antibody can also be used for Immunohistochemistry starting at 5 ug/mL. For immunofluorescence start at 20 ug/mL. Antibody validated: Western Blot in rat samples; Immunohistochemistry in human samples and Immunofluorescence in human samples. All other applications and species not yet tested. Optimal dilutions for each application should be determined by the researcher.

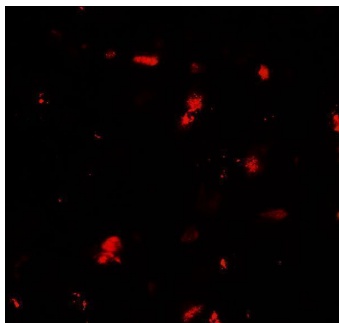
## Anti-GRK6 Antibody (A03623-1) Images



Western blot analysis of GRK6 in rat small intestine tissue lysate with GRK6 antibody at 1 ug/ml.



Immunohistochemistry of GRK6 in human small intestine tissue with GRK6 antibody at 5 ug/mL.



Immunofluorescence of GRK6 in human small intestine tissue with GRK6 antibody at 20 ug/mL.

### Submit a product review to [Biocompare.com](https://www.biocompare.com)

Submit a review of this product to [Biocompare.com](https://www.biocompare.com) to receive a \$20 Amazon.com giftcard! Your reviews help your fellow scientists make the right decisions. Thank you for your contribution.



### Anti-GRK6 Antibody

For Research Use Only. Not for use in diagnostic procedures.