

Anti-SARM SARM1 Antibody

Catalog Number: A03633

About SARM1

Toll-like receptors (TLRs) are signaling molecules that recognize different microbial products during infection and serve as an important link between the innate and adaptive immune responses. SARM (SAM and ARM-containing protein), along with other molecules such as TIRP, TRIF, TIRAP, and MyD88, is thought to serve as an adaptor protein for the TLRs that allows for the activation of downstream kinases and NF-kappaB, and ultimately the expression of proteins involved in host defense. While SARM has not been conclusively shown to associate directly with TLRs, the presence of a Toll-interleukin-1 (TIR) domain in SARM is consistent with a role as a signaling molecule.

Overview

Product Name	Anti-SARM SARM1 Antibody
Reactive Species	Human, Mouse
Description	Boster Bio Anti-SARM SARM1 Antibody (Catalog # A03633). Tested in ELISA, WB, ICC, IF applications. This antibody reacts with Human, Mouse.
Application	ELISA, IF, ICC, WB
Clonality	Polyclonal
Formulation	SARM Antibody is supplied in PBS containing 0.02% sodium azide.
Storage Instructions	SARM antibody can be stored at 4°C up to one year. Antibodies should not be exposed to prolonged high temperatures.
Host	Rabbit
Uniprot ID	Q6SZW1

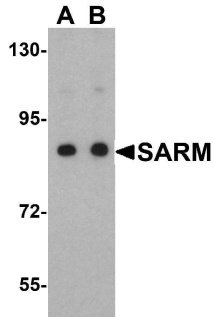
Technical Details

Immunogen	SARM antibody was raised against a peptide corresponding to 14 amino acids near the C-terminus of human SARM. The immunogen is located within amino acids 640 - 690 of SARM.
Predicted Reactive Species	Pig
Isotype	IgG
Form	Liquid
Concentration	1 mg/mL
Purification	SARM Antibody is affinity chromatography purified via peptide column.
Suggested Dilutions	SARM antibody can be used for detection of SARM by Western blot at 0.5 to 1 ug/mL. Antibody can also be used for immunocytochemistry starting at 2 ug/mL. For immunofluorescence start at 2

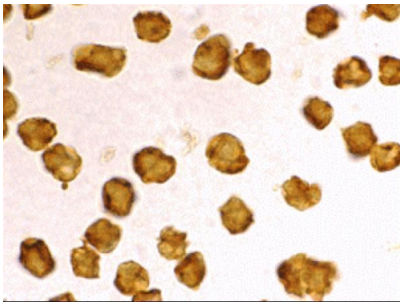
ug/mL.

Antibody validated: Western Blot in human samples; Immunocytochemistry in human samples and Immunofluorescence in human samples. All other applications and species not yet tested. Optimal dilutions for each application should be determined by the researcher.

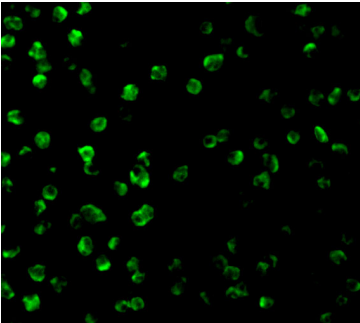
Anti-SARM SARM1 Antibody (A03633) Images



Western blot analysis of SARM in Daudi cell lysate with SARM antibody at (A) 0.5 and (B) 1 ug/mL.



Immunocytochemistry staining of Daudi cells using SARM antibody at 2 ug/mL.



Immunofluorescence of SARM in Daudi cells with SARM antibody at 2 ug/mL.

Submit a product review to [Biocompare.com](https://www.biocompare.com)

Submit a review of this product to [Biocompare.com](https://www.biocompare.com) to receive a \$20 Amazon.com giftcard! Your reviews help your fellow scientists make the right decisions. Thank you for your contribution.



Anti-SARM SARM1 Antibody

For Research Use Only. Not for use in diagnostic procedures.