

Anti-KIF5 Antibody

Catalog Number: A03635

About KIF5A

The kinesin superfamily proteins (KIFs) are microtubule-dependent motors that slide along microtubules and transport cellular organelles and mRNA to different parts of the cell. In neurons, KIF5 performs this role in an anterograde fashion from the neuronal cell body to axonal or dendritic terminals. KIF5 was initially differentiated from the ubiquitously expressed kinesin as being highly enriched in subsets of neurons and selectively concentrated in the cell body. Mutations in one of the isoforms of KIF5 (KIF5A) are thought to be involved in hereditary spastic paraplegias.

Overview

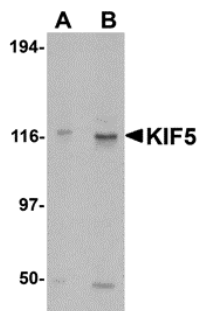
Product Name	Anti-KIF5 Antibody
Reactive Species	Human, Mouse, Rat
Description	Boster Bio Anti-KIF5 Antibody (Catalog # A03635). Tested in ELISA, WB, IHC, ICC, IF applications. This antibody reacts with Human, Mouse, Rat.
Application	ELISA, IF, IHC, ICC, WB
Clonality	Polyclonal
Formulation	KIF5 Antibody is supplied in PBS containing 0.02% sodium azide.
Storage Instructions	KIF5 antibody can be stored at 4°C for three months and -20°C, stable for up to one year. Avoid repeated freeze-thaw cycles. Antibodies should not be exposed to prolonged high temperatures.
Host	Rabbit
Uniprot ID	Q12840

Technical Details

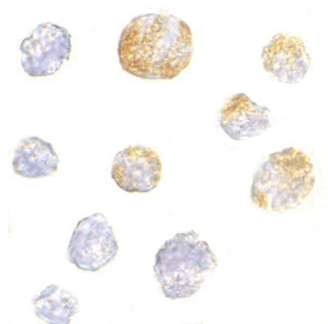
Immunogen	KIF5 antibody was raised against a 20 amino acid synthetic peptide from near the carboxy terminus of human KIF5. The immunogen is located within amino acids 880 - 930 of KIF5.
Predicted Reactive Species	Pig
Cross Reactivity	At least three isoforms of KIF5 are known to exist; this antibody will recognize all three isoforms.
Isotype	IgG
Form	Liquid
Concentration	1 mg/mL
Purification	KIF5 Antibody is affinity chromatography purified via peptide column.
Suggested Dilutions	KIF5 antibody can be used for detection of KIF5 by Western blot at 0.5 - 1 ug/mL. Antibody can also

be used for immunocytochemistry starting at 5 ug/mL and Immunohistochemistry starting at 5 ug/mL. For immunofluorescence start at 20 ug/mL.
Antibody validated: Western Blot in human samples; Immunohistochemistry in mouse samples; Immunocytochemistry in human samples and Immunofluorescence in human and mouse samples. All other applications and species not yet tested. Optimal dilutions for each application should be determined by the researcher.

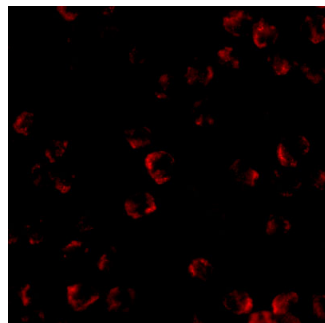
Anti-KIF5 Antibody (A03635) Images



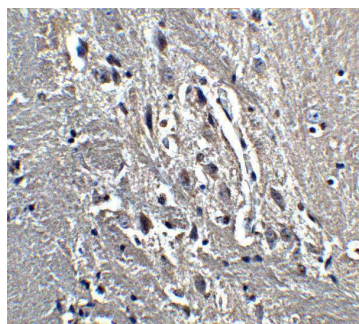
Western blot analysis of KIF5 in K562 cell lysate with KIF5 antibody at (A) 0.5 and (B) 1 ug/mL.



Immunocytochemistry of KIF5 in K562 cells with KIF5 antibody at 5 ug/mL.

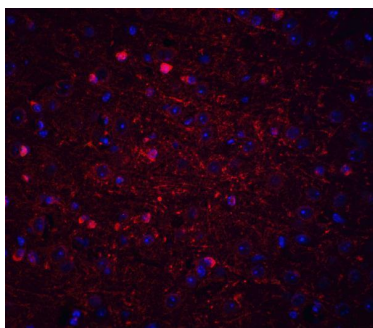


Immunofluorescence of KIF5 in K562 cells with KIF5 antibody at 20 ug/mL.



Immunohistochemistry of KIF5 in mouse brain tissue with KIF5 antibody at 5 ug/ml.

Immunofluorescence of KIF5 in mouse brain tissue with KIF5 antibody at 20 ug/mL. Red: KIF5 Antibody (A03635) Blue: DAPI staining



Submit a product review to Biocompare.com

Submit a review of this product to Biocompare.com to receive a \$20 Amazon.com giftcard! Your reviews help your fellow scientists make the right decisions. Thank you for your contribution.



Anti-KIF5 Antibody

For Research Use Only. Not for use in diagnostic procedures.