

## Anti-NLRP6 Antibody Picoband®

Catalog Number: A03636-2

### About NLRP6

The protein encoded by this gene binds arginine-vasopressin and may be involved in the arginine-vasopressin-mediated regulation of renal salt-water balance. The encoded protein also mediates inflammatory responses in the colon to allow recovery from intestinal epithelial damage and protects against tumorigenesis and the development of colitis. Finally, this protein can increase activation of NF-kappa-B, activation of CASP1 through interaction with ASC, and cAMP accumulation. Two transcript variants encoding different isoforms have been found for this gene.

### Overview

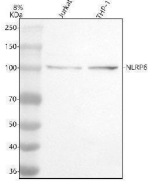
|                      |   |
|----------------------|---|
| Product Name         | Anti-NLRP6 Antibody Picoband®   |
| Reactive Species     | Human   |
| Description          | Boster Bio Anti-NLRP6 Antibody Picoband® catalog # A03636-2. Tested in WB, Flow Cytometry, ELISA applications. This antibody reacts with Human. The brand Picoband indicates this is a premium antibody that guarantees superior quality, high affinity, and strong signals with minimal background in Western blot applications. Only our best-performing antibodies are designated as Picoband, ensuring unmatched performance. |
| Application          | ELISA, Flow Cytometry, WB   |
| Clonality            | Polyclonal  |
| Formulation          | Each vial contains 4 mg Trehalose, 0.9 mg NaCl, 0.2 mg Na <sub>2</sub> HPO <sub>4</sub> .   |
| Storage Instructions | At -20°C for one year from date of receipt. After reconstitution, at 4°C for one month. It can also be aliquotted and stored frozen at -20°C for six months. Avoid repeated freezing and thawing.   |
| Host                 | Rabbit  |
| Uniprot ID           | P59044  |

### Technical Details

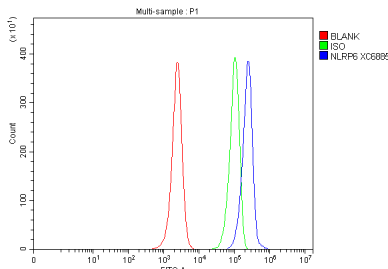
|                     |   |
|---------------------|---|
| Immunogen           | E.coli-derived human NLRP6 recombinant protein (Position: R14-E887). Human NLRP6 shares 71.7% and 72.9% amino acid (aa) sequence identity with mouse and rat NLRP6, respectively. |
| Form                | Lyophilized   |
| Concentration       | Adding 0.2 ml of distilled water will yield a concentration of 500 ug/ml.   |
| Purification        | Immunogen affinity purified.  |
| Suggested Dilutions | Western blot, 0.25-0.5 ug/ml, Human<br>Flow Cytometry (Fixed), 1-3 ug/1x10 <sup>6</sup> cells, Human<br>ELISA, 0.1-0.5 ug/ml  |



## Anti-NLRP6 Antibody Picoband® (A03636-2) Images



Western blot analysis of NLRP6 using anti-NLRP6 antibody (A03636-2). Electrophoresis was performed on a 8% SDS-PAGE gel at 80V (Stacking gel) / 120V (Resolving gel) for 2 hours. The sample well of each lane was loaded with 30 ug of sample under reducing conditions. Lane 1: human Jurkat whole cell lysates, Lane 2: human THP-1 whole cell lysates. After electrophoresis, proteins were transferred to a nitrocellulose membrane at 150 mA for 50-90 minutes. Blocked the membrane with 5% non-fat milk/TBS for 1.5 hour at RT. The membrane was incubated with rabbit anti-NLRP6 antigen affinity purified polyclonal antibody (A03636-2) at 0.5 ug/mL overnight at 4°C, then washed with TBS-0.1% Tween 3 times with 5 minutes each and probed with a goat anti-rabbit IgG-HRP secondary antibody at a dilution of 1:5000 for 1.5 hour at RT. The signal is developed using an ECL Plus Western Blotting Substrate (Catalog # AR1196-200) with Tanon 5200 system. A specific band was detected for NLRP6 at approximately 105 kDa. The expected band size for NLRP6 is at 99 kDa.



Flow Cytometry analysis of HL-60 cells using anti-NLRP6 antibody (A03636-2). Overlay histogram showing HL-60 cells stained with A03636-2 (Blue line). To facilitate intracellular staining, cells were fixed with 4% paraformaldehyde and permeabilized with permeabilization buffer. The cells were blocked with 10% normal goat serum. And then incubated with rabbit anti-NLRP6 Antibody (A03636-2, 1 ug/1x10<sup>6</sup> cells) for 30 min at 20°C. DyLight®488 conjugated goat anti-rabbit IgG (BA1127, 5-10 ug/1x10<sup>6</sup> cells) was used as secondary antibody for 30 minutes at 20°C. Isotype control antibody (Green line) was rabbit IgG (1 ug/1x10<sup>6</sup>) used under the same conditions. Unlabelled sample without incubation with primary antibody and secondary antibody (Red line) was used as a blank control.

### Submit a product review to Biocompare.com

Submit a review of this product to Biocompare.com to receive a \$20 Amazon.com giftcard! Your reviews help your fellow scientists make the right decisions. Thank you for your contribution.



### Anti-NLRP6 Antibody

For Research Use Only. Not for use in diagnostic procedures.