

## Anti-Methionine aminopeptidase 2 METAP2 Antibody

Catalog Number: A03648-1

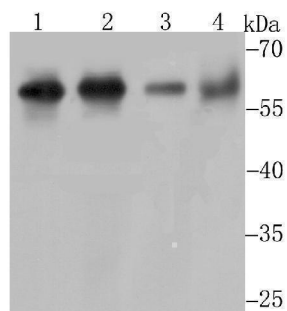
### Overview

Product Name	Anti-Methionine aminopeptidase 2 METAP2 Antibody
Reactive Species	Human, Mouse, Rat
Description	Boster Bio Anti-Methionine aminopeptidase 2 METAP2 Antibody catalog # A03648-1. Tested in WB,ICC,IF,IHC,Flow Cytometry applications. This antibody reacts with Human,Mouse,Rat.
Application	Flow Cytometry, IF, IHC, ICC, WB
Clonality	Polyclonal
Formulation	Rabbit IgG, 1mg/ml in PBS with 0.02% sodium azide, 50% glycerol, pH7.2
Storage Instructions	Store at -20°C for one year. For short term storage and frequent use, store at 4°C for up to one month. Avoid repeated freeze-thaw cycles.
Host	Rabbit
Uniprot ID	P50579

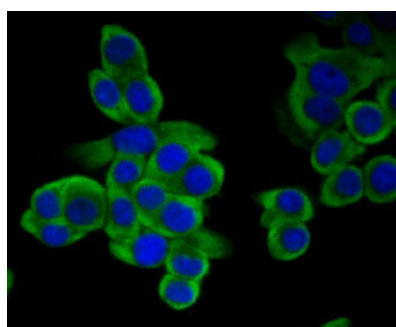
### Technical Details

Immunogen	Recombinant protein within C-terminal human Methionine Aminopeptidase 2.
Isotype	IgG
Form	Liquid
Concentration	1 mg/ml
Purification	ProA affinity purified
Suggested Dilutions	WB: 1:500-1:2,000 ICC/IF: 1:50-1:200 IHC: 1:50-1:200 FC: 1:50-1:100

## Anti-Methionine aminopeptidase 2 METAP2 Antibody (A03648-1) Images



Western blot analysis of Methionine Aminopeptidase 2 on Hela cell using anti-Methionine Aminopeptidase 2 antibody at 1/1,000 dilution. Positive control: Lane 1: Daudi Lane 2: K562 Lane 3: Mouse thymus Lane 4: Mouse kidney



ICC staining Methionine Aminopeptidase 2 in LOVO cells (green). The nuclear counter stain is DAPI (blue). Cells were fixed in paraformaldehyde, permeabilised with 0.25% Triton X100/PBS.

### Submit a product review to [Biocompare.com](https://www.biocompare.com)

Submit a review of this product to [Biocompare.com](https://www.biocompare.com) to receive a \$20 Amazon.com giftcard! Your reviews help your fellow scientists make the right decisions. Thank you for your contribution.



Anti-Methionine aminopeptidase 2 METAP2 Antibody

For Research Use Only. Not for use in diagnostic procedures.