

## Anti-FANCA/Faca Antibody

Catalog Number: A03662

### About FANCA

FANCA (also called Protein FACA or Fanconi anemia group A protein) is involved in DNA repair, perhaps specifically with post-replication repair or a cell cycle checkpoint function. FANCA may also be implicated in interstrand DNA cross-link repair and in the maintenance of normal chromosome stability. The Fanconi anemia complementation group (FANC) currently includes FANCA, FANCB, FANCC, FANCD1 (also called BRCA2), FANCD2, FANCE, FANCF, FANCG, and FANCL. The previously defined group FANCH is the same as FANCA. Fanconi anemia is a genetically heterogeneous recessive disorder characterized by cytogenetic instability, hypersensitivity to DNA crosslinking agents, increased chromosomal breakage, and defective DNA repair. The members of the Fanconi anemia complementation group do not share sequence similarity; they are related by their assembly into a common nuclear protein complex. This gene encodes the protein for complementation group A. Diseases associated with FANCA include Fanconi anemia complementation group a and Congenital Hypoplastic Anemia.

### Overview

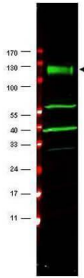
Product Name	Anti-FANCA/Faca Antibody
Reactive Species	Human
Description	Boster Bio Anti-FANCA/Faca Antibody (Catalog # A03662). Tested in ELISA, WB applications. This antibody reacts with Human.
Application	ELISA, WB
Clonality	Polyclonal
Formulation	0.02 M Potassium Phosphate, 0.15 M Sodium Chloride, pH 7.2, 0.01% (w/v) Sodium Azide
Storage Instructions	Store vial at -20°C prior to opening. Aliquot contents and freeze at -20°C or below for extended storage. Avoid cycles of freezing and thawing. Centrifuge product if not completely clear after standing at room temperature. This product is stable for several weeks at 4°C as an undiluted liquid. Dilute only prior to immediate use. Expiration date is one (1) year from date of opening. (Ship on dry ice.)
Host	Rabbit
Uniprot ID	O15360

### Technical Details

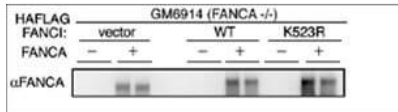
Immunogen	This affinity purified antibody was prepared from whole rabbit serum produced by repeated immunizations with a synthetic peptide corresponding to amino acids 995-1009 of human FANCA protein.
Predicted Reactive Species	Chimpanzee
Cross Reactivity	No cross reactivity with other proteins.

Isotype	IgG
Form	Liquid (sterile filtered)
Concentration	2.2 mg/mL by UV absorbance at 280 nm
Purification	This affinity-purified antibody is directed against human FANCA protein. The product was affinity purified from monospecific antiserum by immunoaffinity purification. A BLAST analysis was used to suggest cross-reactivity with FANCA protein from human and chimpanzee based on 100% homology with the immunizing sequence. Reactivity against homologues from other sources is not known.
Suggested Dilutions	ELISA: 1:15,000 - 1:60,000 WB: 1:500 - 1:3,000 This affinity purified antibody has been tested for use in ELISA and by western blot. Specific conditions for reactivity should be optimized by the end user. Expect a main band at approximately 163 kDa in size corresponding to FANCA by western blotting in the appropriate cell lysate or extract or human tissue.

## Anti-FANCA/Faca Antibody (A03662) Images



Western blot using Boster's affinity purified anti-FANCA antibody shows detection of a band at ~133 kDa (arrowhead) corresponding to FANCA in HeLa whole cell lysates. The identity of the lower molecular weight bands is unknown but may represent breakdown products. Approximately 35µg of lysate was separated by 4-20% Tris Glycine SDS-PAGE. After blocking, the membrane was probed for 2 h at room temperature with the primary antibody diluted to 1:1,500. The membrane was washed and reacted with a 1:10,000 dilution of IRDye™ 800 conjugated Gt-a-Rabbit IgG [H&L] for 45 min at room temperature (800 nm channel, green). Molecular weight estimation was made by comparison to prestained MW markers indicated at left (700 nm channel, red). IRDye™ 800 fluorescence images were captured using the Odyssey® Infrared Imaging System developed by LI-COR. IRDye is a trademark of LI-COR, Inc. Other detection systems will yield similar results.



Western blot using Boster's affinity purified anti-FANCA antibody shows detection of FANCA only in FANCA transfected GM6914 cell lysates. No staining is seen in lysates prepared from FANCA (-/-) cells in the absence of FANCA transfection. Modified from Smogorzewska et al (2007) Cell 129, 289-301.

## Submit a product review to Biocompare.com

Submit a review of this product to Biocompare.com to receive a \$20 Amazon.com giftcard! Your reviews help your fellow scientists make the right decisions. Thank you for your contribution.



### Anti-FANCA/Faca Antibody

For Research Use Only. Not for use in diagnostic procedures.