

Anti-TBC1 domain family member 1 TBC1D1 Antibody

Catalog Number: A03667

About TBC1D1

TBC1D1 is the founding member of a family of proteins sharing a 180- to 200-amino acid TBC domain and presumed to have a role in regulating cell growth and differentiation. These proteins share significant homology with TRE2/USP6, yeast Bub2, and CDC16. TBC1D1 and TBC1D4 (AS160) have been demonstrated to be Rab GAPs (GTPase-activating proteins) that link upstream to Akt and phosphoinositide 3-kinase and downstream to Rabs involved in trafficking of GLUT4 vesicles. TBC1D1 regulates insulin-mediated GLUT4 translocation through its GAP activity, and is a likely Akt substrate. Mutations in the Tbc1d1 gene lead to some cases of severe human obesity.

Overview

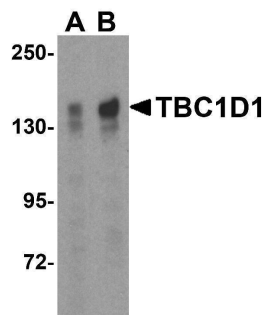
| | |
|----------------------|---|
| Product Name | Anti-TBC1 domain family member 1 TBC1D1 Antibody |
| Reactive Species | Human |
| Description | Boster Bio Anti-TBC1 domain family member 1 TBC1D1 Antibody (Catalog # A03667). Tested in ELISA, WB applications. This antibody reacts with Human. |
| Application | ELISA, WB |
| Clonality | Polyclonal |
| Formulation | TBC1D1 Antibody is supplied in PBS containing 0.02% sodium azide. |
| Storage Instructions | TBC1D1 antibody can be stored at 4°C for three months and -20°C, stable for up to one year. Avoid repeated freeze-thaw cycles. Antibodies should not be exposed to prolonged high temperatures. |
| Host | Rabbit |
| Uniprot ID | Q86TI0 |

Technical Details

| | |
|----------------------------|---|
| Immunogen | TBC1D1 antibody was raised against a 22 amino acid synthetic peptide from near the carboxy terminus of human TBC1D1. The immunogen is located within the last 50 amino acids of TBC1D1. |
| Predicted Reactive Species | Mouse |
| Isotype | IgG |
| Form | Liquid |
| Concentration | 1 mg/mL |
| Purification | TBC1D1 Antibody is affinity chromatography purified via peptide column. |
| Suggested Dilutions | TBC1D1 antibody can be used for detection of TBC1D1 by Western blot at 2 ug/mL. Antibody validated: Western Blot in human samples. All other applications and species not yet |

tested. Optimal dilutions for each application should be determined by the researcher.

Anti-TBC1 domain family member 1 TBC1D1 Antibody (A03667) Images



Western blot analysis of TBC1D1 expression in (A) 293 and (B) Daudi cell lysate with TBC1D1 antibody at 2 ug/ml.

Submit a product review to Biocompare.com

Submit a review of this product to Biocompare.com to receive a \$20 Amazon.com giftcard! Your reviews help your fellow scientists make the right decisions. Thank you for your contribution.



Anti-TBC1 domain family member 1 TBC1D1 Antibody

For Research Use Only. Not for use in diagnostic procedures.