

Anti-Plasminogen/PLG Antibody Picoband™

Catalog Number: A03674-1

About PLG

Plasminogen (PLG) is a circulating zymogen that is converted to the active enzyme plasmin by cleavage of the peptide bond between arg560 and val561, which is mediated by urokinase (PLAU) and tissue plasminogen activator (PLAT). The main function of plasmin is to dissolve fibrin (see, e.g., FGA) clots. Plasmin, like trypsin, belongs to the family of serine proteinases. Defects in this gene are likely a cause of thrombophilia and ligneous conjunctivitis.

Overview

Product Name	Anti-Plasminogen/PLG Antibody Picoband™
Reactive Species	Human, Mouse, Rat
Description	Boster Bio Anti-Plasminogen/PLG Antibody Picoband™ catalog # A03674-1. Tested in Flow Cytometry, WB applications. This antibody reacts with Human, Mouse, Rat.
Application	Flow Cytometry, WB
Clonality	Polyclonal
Formulation	Each vial contains 4mg Trehalose, 0.9mg NaCl, 0.2mg Na ₂ HPO ₄ , 0.05mg NaN ₃ .
Storage Instructions	Store at -20°C for one year from date of receipt. After reconstitution, at 4°C for one month. It can also be aliquotted and stored frozen at -20°C for six months. Avoid repeated freeze-thaw cycles.
Host	Rabbit
Uniprot ID	P00747

Technical Details

Immunogen	A synthetic peptide corresponding to a sequence at the N-terminus of human Plasminogen, which shares 72.7% amino acid (aa) sequence identity with both mouse and rat Plasminogen.
Recommended Detection Systems	Boster recommends Enhanced Chemiluminescent Kit with anti-Rabbit IgG (EK1002) for Western blot.
Cross Reactivity	No cross-reactivity with other proteins.
Isotype	Rabbit IgG
Form	Lyophilized
Concentration	Adding 0.2 ml of distilled water will yield a concentration of 500 ug/ml.
Purification	Immunogen affinity purified.

Suggested Dilutions

Dilute the sample so that the expected range of concentrations fall within the detection range of this kit.

If the expected range of concentration is unknown, a pilot test should be conducted to decide the optimal dilution ratio for your samples.

Some PubMed article(s) citing the expression level of this target are as follows:

Boster Bio's internal QC testing used:

Western blot, 0.1-0.5ug/ml, Human, Mouse, Rat

Flow Cytometry, 1-3ug/1x10⁶ cells, Human

Anti-Plasminogen/PLG Antibody Picoband™ (A03674-1) Images

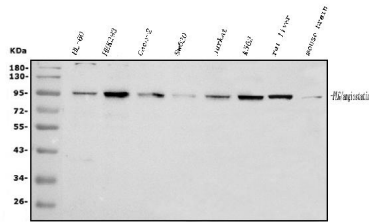


Figure 1. Western blot analysis of Plasminogen using anti-Plasminogen antibody (A03674-1). Electrophoresis was performed on a 5-20% SDS-PAGE gel at 70V (Stacking gel) / 90V (Resolving gel) for 2-3 hours. The sample well of each lane was loaded with 30 ug of sample under reducing conditions.

Lane 1: human HL-60 whole cell lysates,
Lane 2: human HEK293 whole cell lysates,
Lane 3: human Caco-2 whole cell lysates,
Lane 4: human Sw620 whole cell lysates,
Lane 5: human Jurkat whole cell lysates,
Lane 6: human K562 whole cell lysates,
Lane 7: rat liver tissue lysates,
Lane 8: mouse brain tissue lysates.

After electrophoresis, proteins were transferred to a nitrocellulose membrane at 150 mA for 50-90 minutes. Blocked the membrane with 5% non-fat milk/TBS for 1.5 hour at RT. The membrane was incubated with rabbit anti-Plasminogen antigen affinity purified polyclonal antibody (Catalog # A03674-1) at 0.5 ug/mL overnight at 4°C, then washed with TBS-0.1%Tween 3 times with 5 minutes each and probed with a goat anti-rabbit IgG-HRP secondary antibody at a dilution of 1:5000 for 1.5 hour at RT. The signal is developed using an Enhanced Chemiluminescent detection (ECL) kit (Catalog # EK1002) with Tanon 5200 system. A specific band was detected for Plasminogen at approximately 100 kDa. The expected band size for Plasminogen is at 90 kDa.

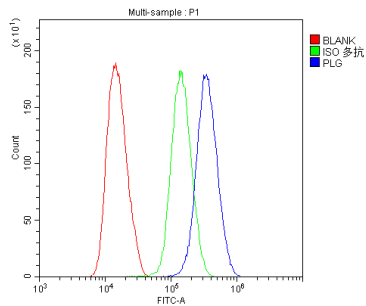


Figure 2. Flow Cytometry analysis of U251 cells using anti-Plasminogen antibody (A03674-1).

Overlay histogram showing U251 cells stained with A03674-1 (Blue line). The cells were blocked with 10% normal goat serum. And then incubated with rabbit anti-Plasminogen Antibody (A03674-1, 1 ug/1x10⁶ cells) for 30 min at 20°C. DyLight®488 conjugated goat anti-rabbit IgG (BA1127, 5-10 ug/1x10⁶ cells) was used as secondary antibody for 30 minutes at 20°C. Isotype control antibody (Green line) was rabbit IgG (1 ug/1x10⁶) used under the same conditions. Unlabelled sample (Red line) was also used as a control.

1 Publications Citing This Product

1. PubMed ID: 10.1073/pnas.2010528118, Increased plasmin-mediated proteolysis of L1CAM in a mouse model of idiopathic normal pressure hydrocephalus

Visit bosterbio.com/anti-plasminogen-picoband-trade-antibody-a03674-1-boster.html to see all 1 publications.

Submit a product review to Biocompare.com

Submit a review of this product to Biocompare.com to receive a \$20 Amazon.com giftcard! Your reviews help your fellow scientists make the right decisions. Thank you for your contribution.



Anti-Plasminogen/PLG Antibody [™]