

## Anti-SR-4 HTR4 Antibody

Catalog Number: A03681-2

### About HTR4

CAND1 is also known as TIP120A, and TATA-binding protein-interacting protein 120A. The SCF complex consists of the invariable components Skp1, Cul1, and Rbx1 as well as a variable F-box protein, and functions as an E3 ubiquitin ligase. E3 ubiquitin ligases regulate various physiological processes. CAND1 binds to Cul1 and potentially regulates the SCF complex. CAND1 physically associates with Cul1 in the nucleus and this interaction is mediated by a central region of Cul1 distinct from its binding sites for Skp1 and Rbx1. CAND1 selectively binds to unneddylated CUL1 and is dissociated by CUL1 neddylation. CAND1 forms a ternary complex with CUL1 and ROC1.

### Overview

Product Name	Anti-SR-4 HTR4 Antibody
Reactive Species	Human, Rat
Description	Boster Bio Anti-SR-4 HTR4 Antibody catalog # A03681-2. Tested in ELISA, IF, WB applications. This antibody reacts with Human, Rat.
Application	ELISA, IF, WB
Clonality	Polyclonal 5A6
Formulation	Liquid in PBS containing 50% glycerol, 0.5% BSA and 0.02% sodium azide.
Storage Instructions	Store at -20°C for one year. For short term storage and frequent use, store at 4°C for up to one month. Avoid repeated freeze-thaw cycles.
Host	Rabbit
Uniprot ID	Q13639

### Technical Details

Immunogen	Synthesized peptide derived from the Internal region of human SR-4. at AA range: 110-190
Predicted Reactive Species	Canine, Equine, Guinea Pig, Rabbit
Cross Reactivity	No cross reactivity with other proteins.
Isotype	IgG
Form	Liquid
Concentration	1 mg/ml
Purification	Immunogen affinity purified
Suggested Dilutions	Dilute the sample so that the expected range of concentrations fall within the detection range of this

kit.

If the expected range of concentration is unknown, a pilot test should be conducted to decide the optimal dilution ratio for your samples.

Some PubMed article(s) citing the expression level of this target are as follows:

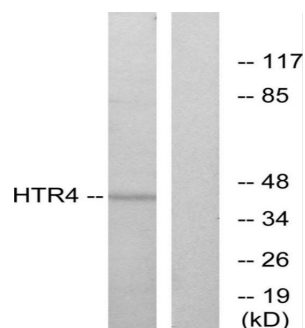
Boster Bio's internal QC testing used:

WB, 1:500-1:2000

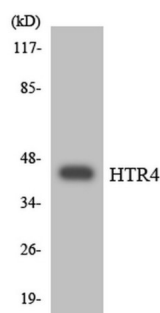
IF 1:200-1:1000

ELISA 1:10000

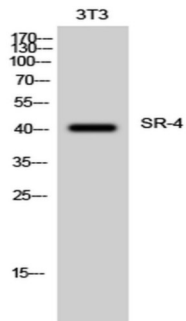
## Anti-SR-4 HTR4 Antibody (A03681-2) Images



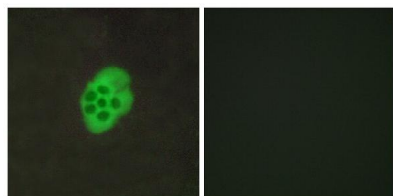
Western blot analysis of lysates from NIH/3T3 cells, using HTR4 Antibody. The lane on the right is blocked with the synthesized peptide.



Western blot analysis of the lysates from HepG2 cells using HTR4 antibody.



Western Blot (WB) analysis of 3T3 cells using SR-4 Polyclonal antibody.



Immunofluorescence analysis of MCF7 cells, using HTR4 Antibody. The picture on the right is blocked with the synthesized peptide.

## Submit a product review to Biocompare.com

Submit a review of this product to Biocompare.com to receive a \$20 Amazon.com giftcard! Your reviews help your fellow scientists make the right decisions. Thank you for your contribution.



Anti-SR-4 HTR4 Antibody