

Anti-CLAUDIN4 CLDN4 Antibody

Catalog Number: A03683

About CLDN4

CLAUDIN4 is an integral membrane protein belonging to the claudin family, a family of cellular adhesion molecules that are components of tight junctions. CLAUDIN4 is a component of tight junction strands and may play a role in internal organ development and function during pre- and postnatal life. The CLAUDIN4 gene is deleted in Williams-Beuren syndrome, a neurodevelopmental disorder affecting multiple systems. CLAUDIN4 is frequently overexpressed in ovarian and other epithelial cancers.

Overview

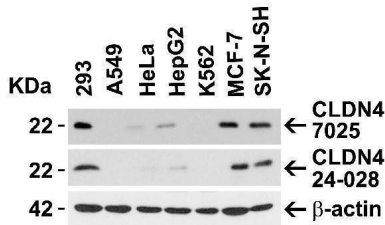
Product Name	Anti-CLAUDIN4 CLDN4 Antibody
Reactive Species	Human
Description	Boster Bio Anti-CLAUDIN4 CLDN4 Antibody (Catalog # A03683). Tested in ELISA, WB, IF applications. This antibody reacts with Human.
Application	ELISA, IF, WB
Clonality	Polyclonal
Formulation	CLAUDIN4 Antibody is supplied in PBS containing 0.02% sodium azide.
Storage Instructions	CLAUDIN4 antibody can be stored at 4°C for three months and -20°C, stable for up to one year. Avoid repeated freeze-thaw cycles. Antibodies should not be exposed to prolonged high temperatures.
Host	Rabbit
Uniprot ID	O14493

Technical Details

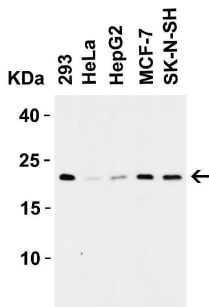
Immunogen	Anti-CLAUDIN4 antibody was raised against a peptide corresponding to 17 amino acids near the carboxy terminus of human CLAUDIN4. The immunogen is located within the last 50 amino acids of CLAUDIN4.
Predicted Reactive Species	Bovine, Mouse, Rat
Cross Reactivity	At least four isoforms of CLAUDIN4 are known to exist; CLAUDIN4 antibody will detect all four isoforms
Isotype	IgG
Form	Liquid
Concentration	1 mg/mL

Purification	CLAUDIN4 Antibody is affinity chromatography purified via peptide column.
Suggested Dilutions	WB: 0.5-2 ug/mL; IF: 20 ug/mL. Antibody validated: Western Blot in human samples; Immunofluorescence in human samples. All other applications and species not yet tested. Optimal dilutions for each application should be determined by the researcher.

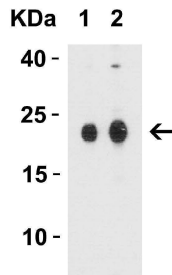
Anti-CLAUDIN4 CLDN4 Antibody (A03683) Images



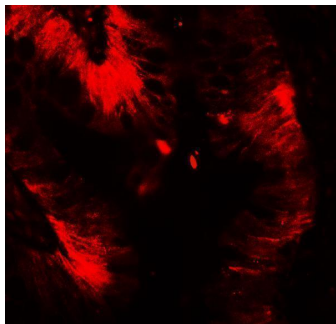
Independent Antibody Validation (IAV) via Protein Expression Profile in Human Cell Lines Loading: 15 ug of lysates per lane. Antibodies: CLAUDIN4, A03683 (1 ug/mL), CLAUDIN4, 24-028 (1 ug/mL), and beta-actin (1 ug/mL), 1h incubation at RT in 5% NFDN/TBST. Secondary: Goat anti-rabbit IgG HRP conjugate at 1:10000 dilution.



Western Blot Validation in Human Cell Lines Loading: 15 ug of lysates per lane. Antibodies: CLAUDIN4, A03683 (1 ug/mL), 1h incubation at RT in 5% NFDN/TBST. Secondary: Goat anti-rabbit IgG HRP conjugate at 1:10000 dilution.



Western Blot Validation in Human Colon Tissue Lysate Loading: 15 ug of lysates per lane. Antibodies: CLAUDIN4, A03683 (Lane 1: 1 ug/mL and Lane 2: 2 ug/mL), 1h incubation at RT in 5% NFDN/TBST. Secondary: Goat anti-rabbit IgG HRP conjugate at 1:10000 dilution.



Western Blot Validation in Human Colon Tissue Lysate Loading: 15 ug of lysates per lane. Antibodies: CLAUDIN4, A03683 (Lane 1: 1 ug/mL and Lane 2: 2 ug/mL), 1h incubation at RT in 5% NFDN/TBST. Secondary: Goat anti-rabbit IgG HRP conjugate at 1:10000 dilution.

Submit a product review to [Biocompare.com](https://www.biocompare.com)

Submit a review of this product to [Biocompare.com](https://www.biocompare.com) to receive a \$20 Amazon.com giftcard! Your reviews help your fellow scientists make the right decisions. Thank you for your contribution.



For Research Use Only. Not for use in diagnostic procedures.