

Anti-PSR JMJD6 Monoclonal Antibody

Catalog Number: A03690

About JMJD6

CAND1 is also known as TIP120A, and TATA-binding protein-interacting protein 120A. The SCF complex consists of the invariable components Skp1, Cul1, and Rbx1 as well as a variable F-box protein, and functions as an E3 ubiquitin ligase. E3 ubiquitin ligases regulate various physiological processes. CAND1 binds to Cul1 and potentially regulates the SCF complex. CAND1 physically associates with Cul1 in the nucleus and this interaction is mediated by a central region of Cul1 distinct from its binding sites for Skp1 and Rbx1. CAND1 selectively binds to unneddylated CUL1 and is dissociated by CUL1 neddylation. CAND1 forms a ternary complex with CUL1 and ROC1.

Overview

Product Name	Anti-PSR JMJD6 Monoclonal Antibody
Reactive Species	Bovine, Human, Mouse, Rat
Description	Boster Bio Anti-PSR JMJD6 Monoclonal Antibody catalog # A03690. Tested in IF, IHC, WB applications. This antibody reacts with Bovine, Human, Mouse, Rat.
Application	IF, IHC, WB
Clonality	Monoclonal 5A6
Formulation	Purified mouse monoclonal in buffer containing 0.1M Tris-Glycine (pH 7.4, 150 mM NaCl) with 0.2% sodium azide, 50% glycerol.
Storage Instructions	Store at -20°C for one year. For short term storage and frequent use, store at 4°C for up to one month. Avoid repeated freeze-thaw cycles.
Host	Mouse
Uniprot ID	Q6NYC1

Technical Details

Immunogen	Purified recombinant human PSR (N-terminal) protein fragments expressed in E.coli.
Predicted Reactive Species	Canine, Equine, Guinea Pig, Rabbit
Cross Reactivity	No cross reactivity with other proteins.
Isotype	IgG
Form	Liquid
Concentration	This antibody's concentration is >0.5mg/ml.
Purification	Protein A purified

Suggested Dilutions

Dilute the sample so that the expected range of concentrations fall within the detection range of this kit.

If the expected range of concentration is unknown, a pilot test should be conducted to decide the optimal dilution ratio for your samples.

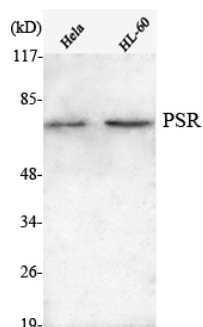
Some PubMed article(s) citing the expression level of this target are as follows:

Boster Bio's internal QC testing used:

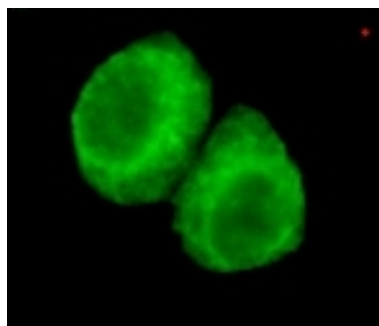
WB, 1:1000-1:2000

IF, 1:100-1:500

Anti-PSR JMJD6 Monoclonal Antibody (A03690) Images



Western Blot (WB) analysis using PSR Monoclonal antibody against HeLa, HL-60 cell lysate.



Immunofluorescence (IF) analysis of HeLa cells using PSR Monoclonal antibody.

Submit a product review to Biocompare.com

Submit a review of this product to Biocompare.com to receive a \$20 Amazon.com giftcard! Your reviews help your fellow scientists make the right decisions. Thank you for your contribution.



Anti-PSR JMJD6 Monoclonal Antibody