

## Anti-JMJD6 Antibody

Catalog Number: A03690-1

### About JMJD6

The jumonji domain-containing protein (JMJD) family is defined by the presence of the JmjC domain that is observed in several diverse species. JMJD6 was initially identified as a membrane protein that participates in phagocytosis but recent studies have shown that it has other functions when it is expressed in the cytosol and nucleus. JMJD6 is thought to play important roles in regulation of development and differentiation as knockdown experiments in mice resulted in neonatal lethality with severe defects in the morphology of numerous organs. JMJD6 also can catalyze the lysyl-hydroxylation of U2AF65, a protein involved with RNA splicing, suggesting that some of the functions attributed to JMJD6 may be due to its regulatory activity of RNA splicing.

### Overview

Product Name	Anti-JMJD6 Antibody
Reactive Species	Human, Mouse, Rat
Description	Boster Bio Anti-JMJD6 Antibody (Catalog # A03690-1). Tested in ELISA, WB, IHC-P, IF applications. This antibody reacts with Human, Mouse, Rat.
Application	ELISA, IF, IHC-P, WB
Clonality	Polyclonal
Formulation	JMJD6 Antibody is supplied in PBS containing 0.02% sodium azide.
Storage Instructions	JMJD6 antibody can be stored at 4°C for three months and -20°C, stable for up to one year. Avoid repeated freeze-thaw cycles. Antibodies should not be exposed to prolonged high temperatures.
Host	Rabbit
Uniprot ID	Q6NYC1

### Technical Details

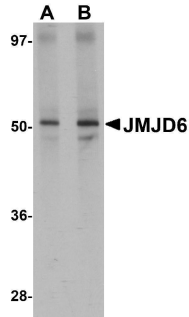
Immunogen	JMJD6 antibody was raised against a 15 amino acid synthetic peptide from near the amino terminus of human JMJD6. The immunogen is located within amino acids 70 - 120 of JMJD6.
Predicted Reactive Species	Bovine, Chicken
Isotype	IgG
Form	Liquid
Concentration	1 mg/mL
Purification	JMJD6 Antibody is affinity chromatography purified via peptide column.

Suggested Dilutions

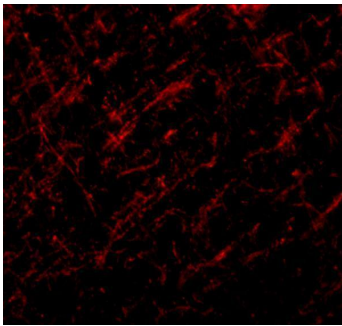
JMJD6 antibody can be used for detection of JMJD6 by Western blot at 1 - 2 ug/mL. Antibody can also be used for immunohistochemistry starting at 2.5 ug/mL. For immunofluorescence start at 20 ug/mL.

Antibody validated: Western Blot in human samples; Immunohistochemistry in rat samples and Immunofluorescence in rat samples. All other applications and species not yet tested. Optimal dilutions for each application should be determined by the researcher.

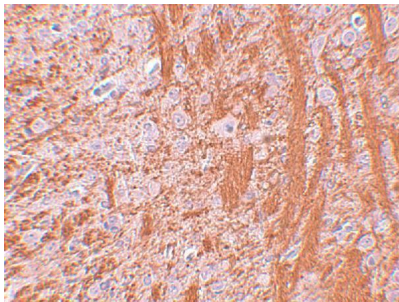
## Anti-JMJD6 Antibody (A03690-1) Images



Western blot analysis of JMJD6 in human brain tissue lysate with JMJD6 antibody at (A) 1 and (B) 2 ug/mL.



Immunofluorescence of JMJD6 in rat brain tissue with JMJD6 antibody at 20 ug/mL.



Immunohistochemistry of JMJD6 in rat brain tissue with JMJD6 antibody at 2.5 ug/mL.

### Submit a product review to [Biocompare.com](https://www.biocompare.com)

Submit a review of this product to [Biocompare.com](https://www.biocompare.com) to receive a \$20 Amazon.com giftcard! Your reviews help your fellow scientists make the right decisions. Thank you for your contribution.



Anti-JMJD6 Antibody

For Research Use Only. Not for use in diagnostic procedures.