

Anti-DREAM Antibody

Catalog Number: A03700

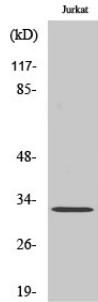
Overview

Product Name	Anti-DREAM Antibody
Reactive Species	Human, Mouse
Description	Boster Bio Anti-DREAM Antibody catalog # A03700. Tested in WB, IHC, IF, ELISA applications. This antibody reacts with Human, Mouse.
Application	ELISA, IF, IHC, WB
Clonality	Polyclonal
Formulation	Liquid in PBS containing 50% glycerol, 0.5% stabilizing protein and 0.02% sodium azide. *This antibody is supplied in a stabilized formulation. Compatibility with conjugation reactions depends on the chemistry of the conjugation method used. For conjugation methods that are not compatible with the stabilizing components present in this formulation, a carrier-free antibody format is required.
Storage Instructions	Store at -20°C for one year. For short term storage and frequent use, store at 4°C for up to one month. Avoid repeated freeze-thaw cycles.
Host	Rabbit
Uniprot ID	Q9Y2W7

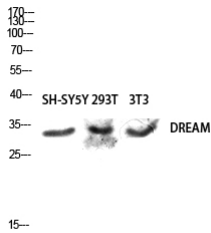
Technical Details

Immunogen	The antiserum was produced against synthesized peptide derived from human Calsenilin/KCNIP3. AA range:29-78
Cross Reactivity	No cross reactivity with other proteins.
Isotype	IgG
Form	Liquid
Concentration	1 mg/ml
Purification	Immunogen affinity purified
Suggested Dilutions	WB 1:500-1:2000 IHC 1:100-1:300 IF 1:200-1:1000 ELISA 1:20000

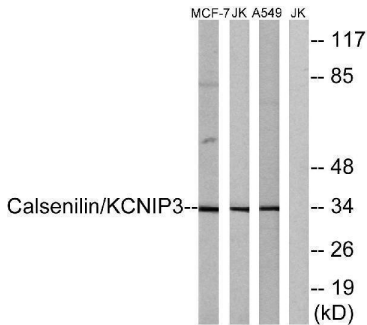
Anti-DREAM Antibody (A03700) Images



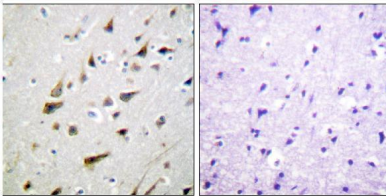
Western Blot analysis of various cells using DREAM Polyclonal Antibody diluted at 1:500



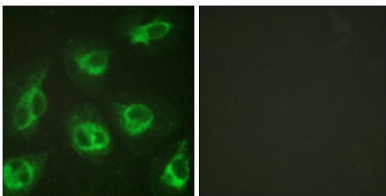
Western blot analysis of SH-SY5Y 293T 3T3 lysis using DREAM antibody. Antibody was diluted at 1:500



Western blot analysis of lysates from MCF-7, Jurkat, and A549 cells, using Calsenilin/KCNIP3 Antibody. The lane on the right is blocked with the synthesized peptide.



Immunohistochemistry analysis of paraffin-embedded human brain tissue, using Calsenilin/KCNIP3 Antibody. The picture on the right is blocked with the synthesized peptide.



Immunofluorescence analysis of HeLa cells, using Calsenilin/KCNIP3 Antibody. The picture on the right is blocked with the synthesized peptide.

Submit a product review to [Biocompare.com](https://www.biocompare.com)

Submit a review of this product to [Biocompare.com](https://www.biocompare.com) to receive a \$20 Amazon.com giftcard! Your



reviews help your fellow scientists make the right decisions. Thank you for your contribution.

Anti-DREAM Antibody

For Research Use Only. Not for use in diagnostic procedures.