

Anti-SMARCE1 Antibody

Catalog Number: A03739

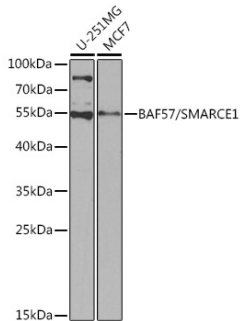
Overview

| | |
|----------------------|--|
| Product Name | Anti-SMARCE1 Antibody |
| Reactive Species | Human, Mouse, Rat |
| Description | Boster Bio Anti-SMARCE1 Antibody catalog # A03739. Tested in WB,IHC,ICC/IF,IP applications. This antibody reacts with Human,Mouse,Rat. |
| Application | IP, IF, IHC, ICC, WB |
| Clonality | Polyclonal |
| Formulation | Rabbit IgG, 1mg/ml in PBS with 0.02% sodium azide, 50% glycerol, pH7.2 |
| Storage Instructions | Store at -20°C for one year. For short term storage and frequent use, store at 4°C for up to one month. Avoid repeated freeze-thaw cycles. |
| Host | Rabbit |
| Uniprot ID | Q969G3 |

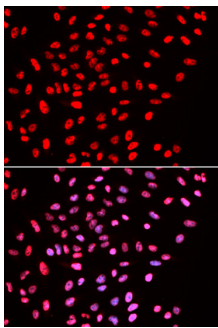
Technical Details

| | |
|---------------------|---|
| Immunogen | Recombinant fusion protein of human BAF57/BAF57/SMARCE1(NP_003070.3). |
| Isotype | IgG |
| Form | Liquid |
| Concentration | 1 mg/ml |
| Purification | The antibody was affinity-purified from rabbit antiserum by affinity-chromatography using epitope-specific immunogen and the purity is > 95% (by SDS-PAGE). |
| Suggested Dilutions | WB: 1:500-1:2000 IHC: 1:50-1:200 ICC/IF: 1:50-1:200 IP: 1:20-1:50 |

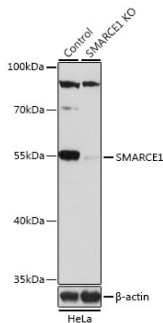
Anti-SMARCE1 Antibody (A03739) Images



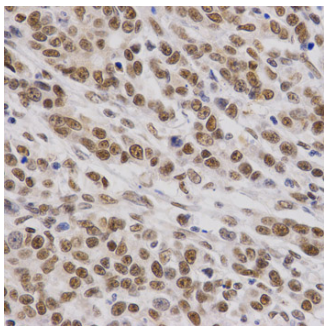
Western blot analysis of extracts of various cell lines, using BAF57/BAF57/SMARCE1 antibody at 1:1000 dilution. Secondary antibody: HRP Goat Anti-Rabbit IgG at 1:10000 dilution. Lysates/proteins: 25ug per lane. Blocking buffer: 3% nonfat dry milk in TBST. Detection: ECL Basic Kit. Exposure time: 90s.



Immunofluorescence analysis of HeLa cells using BAF57/BAF57/SMARCE1 antibody.



Immunoprecipitation analysis of 150ug extracts of Jurkat cells using 3ug BAF57/BAF57/SMARCE1 antibody. Western blot was performed from the immunoprecipitate using BAF57/BAF57/SMARCE1 antibody at a dilution of 1:1000.



Western blot analysis of extracts from normal and BAF57/SMARCE1 knockout 293T cells, using BAF57/SMARCE1 antibody at 1:1000 dilution. Secondary antibody: HRP Goat Anti-Rabbit IgG at 1:10000 dilution. Lysates/proteins: 25ug per lane. Blocking buffer: 3% nonfat dry milk in TBST. Detection: ECL Enhanced Kit. Exposure time: 180s.

Submit a product review to Biocompare.com

Submit a review of this product to Biocompare.com to receive a \$20 Amazon.com giftcard! Your reviews help your fellow scientists make the right decisions. Thank you for your contribution.



Anti-SMARCE1 Antibody

For Research Use Only. Not for use in diagnostic procedures.