

## Anti-Stabilin-2 STAB2 Antibody

Catalog Number: A03742

### Overview

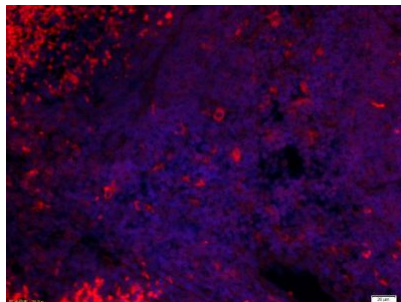
Product Name	Anti-Stabilin-2 STAB2 Antibody
Reactive Species	Mouse
Description	Boster Bio Anti-Stabilin-2 STAB2 Antibody catalog # A03742. Tested in ELISA,IHC,ICC,IF applications. This antibody reacts with Mouse.
Application	ELISA, IF, IHC, ICC
Clonality	Polyclonal
Formulation	Rabbit IgG, 1mg/ml in PBS with 0.02% sodium azide, 50% glycerol, pH7.2
Storage Instructions	Store at -20°C for one year. For short term storage and frequent use, store at 4°C for up to one month. Avoid repeated freeze-thaw cycles.
Host	Rabbit
Uniprot ID	Q8WWQ8

### Technical Details

Immunogen	KLH conjugated synthetic peptide derived from human Stabilin 2 :2201-2300/2551
Isotype	IgG
Form	Liquid
Concentration	1 mg/ml
Purification	The antibody was affinity-purified from rabbit antiserum by affinity-chromatography using epitope-specific immunogen and the purity is > 95% (by SDS-PAGE).
Suggested Dilutions	ELISA: 1:5000-10000 IHC: 1:100-500 ICC: 1:100-500 IF: 1:100-500

## Anti-Stabilin-2 STAB2 Antibody (A03742) Images

---



Tissue/cell: mouse spleen tissue; 4% Paraformaldehyde-fixed and paraffin-embedded; Antigen retrieval: citrate buffer ( 0.01M, pH 6.0 ), Boiling bathing for 15min; Blocking buffer at 37°C for 20 min; Incubation: Anti-Stabilin 2 Polyclonal Antibody, Unconjugated 1:200, overnight at 4°C; The secondary antibody was Goat Anti-Rabbit IgG, Cy3 conjugated used at 1:200 dilution for 40 minutes at 37°C. DAPI was used to stain the cell nuclei.

### Submit a product review to Biocompare.com

---

Submit a review of this product to Biocompare.com to receive a \$20 Amazon.com giftcard! Your reviews help your fellow scientists make the right decisions. Thank you for your contribution.



Anti-Stabilin-2 STAB2 Antibody

For Research Use Only. Not for use in diagnostic procedures.