

Anti-Stabilin-2 STAB2 Antibody

Catalog Number: A03742-1

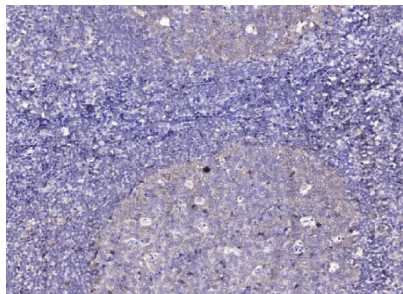
Overview

Product Name	Anti-Stabilin-2 STAB2 Antibody
Reactive Species	Human, Mouse, Rat
Description	Boster Bio Anti-Stabilin-2 STAB2 Antibody catalog # A03742-1. Tested in IHC, IF applications. This antibody reacts with Human, Mouse, Rat.
Application	IF, IHC
Clonality	Polyclonal
Formulation	Liquid form in PBS containing 50% glycerol, and 0.02% sodium azide.
Storage Instructions	Store at -20°C for one year. For short term storage and frequent use, store at 4°C for up to one month. Avoid repeated freeze-thaw cycles.
Host	Rabbit
Uniprot ID	Q8WWQ8

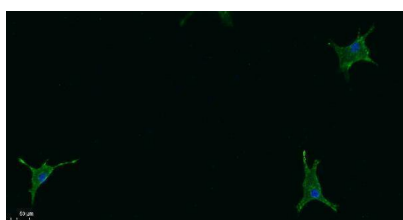
Technical Details

Immunogen	Synthesized peptide derived from human protein at AA range: 980-1060
Isotype	IgG
Form	Liquid
Concentration	1 mg/ml
Purification	STAB2 antibody was affinity-purified from rabbit antiserum by affinity-chromatography using epitope-specific immunogen.
Suggested Dilutions	IHC 1:50-300 IF 1:100-300

Anti-Stabilin-2 STAB2 Antibody (A03742-1) Images



Immunohistochemical analysis of paraffin-embedded human tonsil. 1, Tris-EDTA, pH9.0 was used for antigen retrieval. 2 Antibody was diluted at 1:200 (4° overnight).3, Secondary antibody was diluted at 1:200 (room temperature, 45min).



Immunofluorescence analysis of A549. 1, primary Antibody was diluted at 1:200 (4°C overnight). 2, Goat Anti Rabbit IgG (H&L) - Alexa Fluor 488 Secondary antibody was diluted at 1:1000 (room temperature, 50min).3, Picture B: DAPI (blue) 10min.

Submit a product review to Biocompare.com

Submit a review of this product to Biocompare.com to receive a \$20 Amazon.com giftcard! Your reviews help your fellow scientists make the right decisions. Thank you for your contribution.



Anti-Stabilin-2 STAB2 Antibody

For Research Use Only. Not for use in diagnostic procedures.