

## Anti-Autophagy-related protein 9A ATG9A Antibody

Catalog Number: A03757

### About ATG9A

Autophagy, the process of bulk degradation of cellular proteins through an autophagosomic-lysosomal pathway is important for normal growth control and may be defective in tumor cells. It is involved in the preservation of cellular nutrients under starvation conditions as well as the normal turnover of cytosolic components. This process is negatively regulated by TOR (Target of rapamycin) through phosphorylation of autophagy protein APG1. ATG9A, a multi-spanning membrane protein localizing to the Golgi apparatus and late endosomes, has been proposed to mediate membrane transport to generate autophagosomes. ATG9A has also been implicated as a regulator of STING (stimulator of interferon genes)-mediated innate immune response.

### Overview

Product Name	Anti-Autophagy-related protein 9A ATG9A Antibody
Reactive Species	Human, Mouse, Rat
Description	Boster Bio Anti-Autophagy-related protein 9A ATG9A Antibody (Catalog # A03757). Tested in ELISA, WB, IHC-P, IF applications. This antibody reacts with Human, Mouse, Rat.
Application	ELISA, IF, IHC-P, WB
Clonality	Polyclonal
Formulation	ATG9A Antibody is supplied in PBS containing 0.02% sodium azide.
Storage Instructions	ATG9A antibody can be stored at 4°C for three months and -20°C, stable for up to one year. Avoid repeated freeze-thaw cycles. Antibodies should not be exposed to prolonged high temperatures.
Host	Rabbit
Uniprot ID	Q7Z3C6

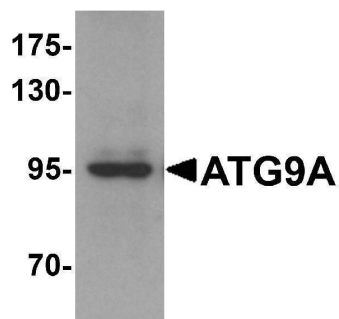
### Technical Details

Immunogen	ATG9A antibody was raised against an 18 amino acid synthetic peptide near the carboxy terminus of human ATG9A. The immunogen is located within amino acids 720 - 770 of ATG9A.
Predicted Reactive Species	Bovine
Isotype	IgG
Form	Liquid
Concentration	1 mg/mL
Purification	ATG9A Antibody is affinity chromatography purified via peptide column.

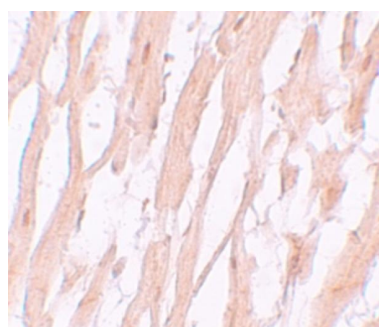
**Suggested Dilutions**

ATG9A antibody can be used for detection of ATG9A by Western blot at 1 ug/mL. Antibody can also be used for immunohistochemistry starting at 5 ug/mL. For immunofluorescence start at 20 ug/mL. Antibody validated: Western Blot in mouse samples; Immunohistochemistry in human samples and Immunofluorescence in human samples. All other applications and species not yet tested. Optimal dilutions for each application should be determined by the researcher.

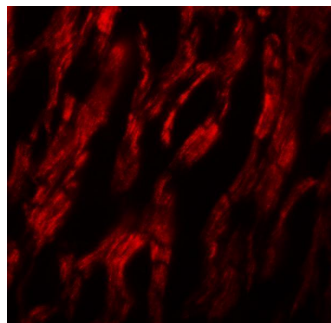
## Anti-Autophagy-related protein 9A ATG9A Antibody (A03757) Images



Western blot analysis of ATG9A in mouse heart tissue lysate with ATG9A antibody at 1 ug/mL.



Immunohistochemistry of ATG9A in human heart tissue with ATG9A antibody at 5 ug/mL.



Immunofluorescence of ATG9A in human heart tissue with ATG9A antibody at 20 ug/mL.

### Submit a product review to Biocompare.com

Submit a review of this product to Biocompare.com to receive a \$20 Amazon.com giftcard! Your reviews help your fellow scientists make the right decisions. Thank you for your contribution.



Anti-Autophagy-related protein 9A ATG9A Antibody

For Research Use Only. Not for use in diagnostic procedures.