

Anti-PHF1 (K381) Antibody

Catalog Number: A03758

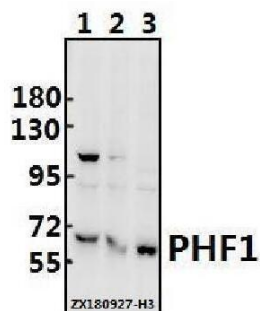
Overview

Product Name	Anti-PHF1 (K381) Antibody
Reactive Species	Human, Mouse
Description	Boster Bio Anti-PHF1 (K381) Antibody catalog # A03758. Tested in WB,IHC applications. This antibody reacts with Human,Mouse.
Application	IHC, WB
Clonality	Polyclonal
Formulation	Rabbit IgG, 1mg/ml in PBS with 0.02% sodium azide, 50% glycerol, pH7.2
Storage Instructions	Store at -20°C for one year. For short term storage and frequent use, store at 4°C for up to one month. Avoid repeated freeze-thaw cycles.
Host	Rabbit
Uniprot ID	O43189

Technical Details

Immunogen	Synthetic peptide, corresponding to amino acids 361-410 of Human PHF1.
Isotype	IgG
Form	Liquid
Concentration	1 mg/ml
Purification	The antibody was affinity-purified from rabbit antiserum by affinity-chromatography using epitope-specific immunogen and the purity is > 95% (by SDS-PAGE).
Suggested Dilutions	WB: 1:500-1:1000 IHC: 1:50-1:200

Anti-PHF1 (K381) Antibody (A03758) Images



Western blot (WB) analysis of PHF1 pAb at 1:500 dilution
Lane1:DLD whole cell lysate(40ug) Lane2:HCT116 whole cell lysate(40ug) Lane3:CT26 whole cell lysate(40ug)

Submit a product review to Biocompare.com

Submit a review of this product to Biocompare.com to receive a \$20 Amazon.com giftcard! Your reviews help your fellow scientists make the right decisions. Thank you for your contribution.



Anti-PHF1 (K381) Antibody

For Research Use Only. Not for use in diagnostic procedures.