

Anti-CYP11B1/C11B2/CYP11B2 Antibody Picoband®

Catalog Number: A03766-3

About CYP11B1/2

CYP11B1 shows close homology to the CYP11B2 gene, which encodes aldosterone synthase and is normally expressed only in the zona glomerulosa. Both genes map to chromosome 8q21. This gene encodes a member of the cytochrome P450 superfamily of enzymes. The cytochrome P450 proteins are monooxygenases which catalyze many reactions involved in drug metabolism and synthesis of cholesterol, steroids and other lipids. This protein localizes to the mitochondrial inner membrane.

Overview

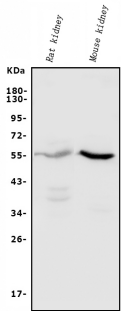
Product Name	Anti-CYP11B1/C11B2/CYP11B2 Antibody Picoband®
Reactive Species	Human, Mouse, Rat
Description	Boster Bio Anti-CYP11B1/C11B2/CYP11B2 Antibody Picoband® catalog # A03766-3. Tested in ELISA, Flow Cytometry, WB applications. This antibody reacts with Human, Mouse, Rat. The brand Picoband indicates this is a premium antibody that guarantees superior quality, high affinity, and strong signals with minimal background in Western blot applications. Only our best-performing antibodies are designated as Picoband, ensuring unmatched performance.
Application	ELISA, Flow Cytometry, WB
Clonality	Polyclonal
Formulation	Each vial contains 4mg Trehalose, 0.9mg NaCl, 0.2mg Na ₂ HPO ₄ , 0.01mg NaN ₃ .
Storage Instructions	Store at -20°C for one year from date of receipt. After reconstitution, at 4°C for one month. It can also be aliquotted and stored frozen at -20°C for six months. Avoid repeated freeze-thaw cycles.
Host	Rabbit
Uniprot ID	P15538

Technical Details

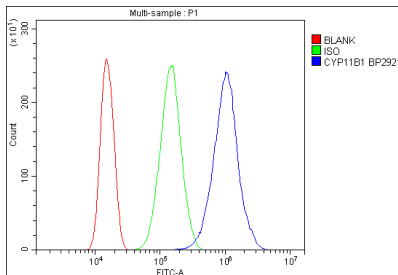
Immunogen	E.coli-derived human CYP11B1/C11B2/CYP11B2 recombinant protein (Position: M1-P491).
Recommended Detection Systems	Boster recommends Enhanced Chemiluminescent Kit with anti-Rabbit IgG (EK1002) for Western blot.
Cross Reactivity	No cross-reactivity with other proteins.
Isotype	Rabbit IgG
Form	Lyophilized
Concentration	Adding 0.2 ml of distilled water will yield a concentration of 500 ug/ml.

Purification	Immunogen affinity purified.
Suggested Dilutions	Western blot, 0.25-0.5ug/ml, Mouse, Rat Flow Cytometry (Fixed), 1-3ug/1x10 ⁶ cells, Human ELISA, 0.1-0.5ug/ml, -

Anti-CYP11B1/C11B2/CYP11B2 Antibody Picoband® (A03766-3) Images



Western blot analysis of CYP11B1/C11B2/CYP11B2 using anti-CYP11B1/C11B2/CYP11B2 antibody (A03766-3). Electrophoresis was performed on a 5-20% SDS-PAGE gel at 70V (Stacking gel) / 90V (Resolving gel) for 2-3 hours. The sample well of each lane was loaded with 50ug of sample under reducing conditions. Lane 1: rat kidney tissue lysates, Lane 2: mouse kidney tissue lysates. After Electrophoresis, proteins were transferred to a Nitrocellulose membrane at 150mA for 50-90 minutes. Blocked the membrane with 5% Non-fat Milk/ TBS for 1.5 hour at RT. The membrane was incubated with rabbit anti-CYP11B1/C11B2/CYP11B2 antigen affinity purified polyclonal antibody (Catalog # A03766-3) at 0.5 ug/mL overnight at 4°C, then washed with TBS-0.1%Tween 3 times with 5 minutes each and probed with a goat anti-rabbit IgG-HRP secondary antibody at a dilution of 1:10000 for 1.5 hour at RT. The signal is developed using an Enhanced Chemiluminescent detection (ECL) kit (Catalog # EK1002) with Tanon 5200 system. A specific band was detected for CYP11B1/C11B2/CYP11B2 at approximately 55KD. The expected band size for CYP11B1/C11B2/CYP11B2 is at 55KD.



Flow Cytometry analysis of 293T cells using anti-CYP11B1/C11B2/CYP11B2 antibody (A03766-3). Overlay histogram showing 293T cells stained with A03766-3 (Blue line). To facilitate intracellular staining, cells were fixed with 4% paraformaldehyde and permeabilized with permeabilization buffer. The cells were blocked with 10% normal goat serum. And then incubated with rabbit anti-CYP11B1/C11B2/CYP11B2 Antibody (A03766-3, 1ug/1x10⁶ cells) for 30 min at 20°C. DyLight®488 conjugated goat anti-rabbit IgG (BA1127, 5-10ug/1x10⁶ cells) was used as secondary antibody for 30 minutes at 20°C. Isotype control antibody (Green line) was rabbit IgG (1ug/1x10⁶) used under the same conditions. Unlabelled sample without incubation with primary antibody and secondary antibody (Red line) was used as a blank control.

Submit a product review to [Biocompare.com](https://www.biocompare.com)

Submit a review of this product to [Biocompare.com](https://www.biocompare.com) to receive a \$20 Amazon.com giftcard! Your reviews help your fellow scientists make the right decisions. Thank you for your contribution.



Anti-CYP11B1/C11B2/CYP11B2 Antibody

For Research Use Only. Not for use in diagnostic procedures.