

## Anti-BAP31 BCAP31 Antibody

Catalog Number: A03767-2

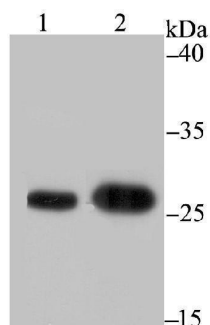
### Overview

Product Name	Anti-BAP31 BCAP31 Antibody
Reactive Species	Human, Mouse
Description	Boster Bio Anti-BAP31 BCAP31 Antibody catalog # A03767-2. Tested in WB,ICC,IF,IHC,Flow Cytometry applications. This antibody reacts with Human,Mouse.
Application	Flow Cytometry, IF, IHC, ICC, WB
Clonality	Polyclonal
Formulation	Rabbit IgG, 1mg/ml in PBS with 0.02% sodium azide, 50% glycerol, pH7.2
Storage Instructions	Store at -20°C for one year. For short term storage and frequent use, store at 4°C for up to one month. Avoid repeated freeze-thaw cycles.
Host	Rabbit
Uniprot ID	P51572

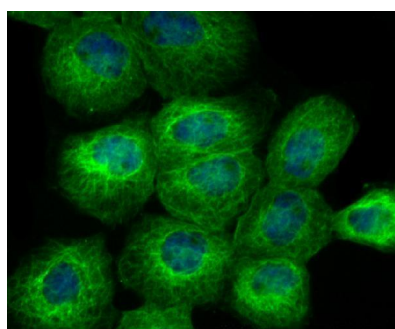
### Technical Details

Immunogen	Synthetic peptide within the C-terminus of human BAP31.
Isotype	IgG
Form	Liquid
Concentration	1 mg/ml
Purification	ProA affinity purified
Suggested Dilutions	WB: 1:500-1:2,000 ICC: 1:50-1:200 IHC: 1:50-1:200 FC: 1:50-1:100

## Anti-BAP31 BCAP31 Antibody (A03767-2) Images



Western blot analysis of BAP31 on different lysates using anti-BAP31 antibody at 1/1,000 dilution. Positive control:  
Lane 1: A431 Lane 2: SK-Br-3



ICC staining BAP31 in A431 cells (green). The nuclear counter stain is DAPI (blue). Cells were fixed in paraformaldehyde, permeabilised with 0.25% Triton X100/PBS.

### Submit a product review to [Biocompare.com](https://www.biocompare.com)

Submit a review of this product to [Biocompare.com](https://www.biocompare.com) to receive a \$20 Amazon.com giftcard! Your reviews help your fellow scientists make the right decisions. Thank you for your contribution.



Anti-BAP31 BCAP31 Antibody

For Research Use Only. Not for use in diagnostic procedures.