

Anti-Tra-2 Alpha (G241) TRA2A Antibody

Catalog Number: A03770-1

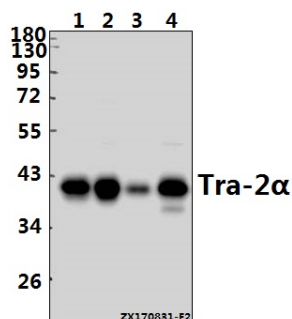
Overview

Product Name	Anti-Tra-2 Alpha (G241) TRA2A Antibody
Reactive Species	Human, Mouse, Rat
Description	Boster Bio Anti-Tra-2 Alpha (G241) TRA2A Antibody catalog # A03770-1. Tested in WB,IHC,IF applications. This antibody reacts with Human,Mouse,Rat.
Application	IF, IHC, WB
Clonality	Polyclonal
Formulation	Rabbit IgG, 1mg/ml in PBS with 0.02% sodium azide, 50% glycerol, pH7.2
Storage Instructions	Store at -20°C for one year. For short term storage and frequent use, store at 4°C for up to one month. Avoid repeated freeze-thaw cycles.
Host	Rabbit
Uniprot ID	Q13595

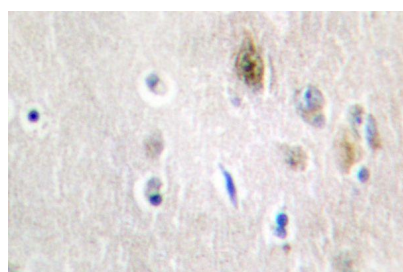
Technical Details

Immunogen	Synthetic peptide, corresponding to amino acids 210-258 of Human Tra-2alpha.
Isotype	IgG
Form	Liquid
Concentration	1 mg/ml
Purification	The antibody was affinity-purified from rabbit antiserum by affinity-chromatography using epitope-specific immunogen and the purity is > 95% (by SDS-PAGE).
Suggested Dilutions	WB: 1:500-1:1000 IHC: 1:50-1:200 IF: 1:50-1:200

Anti-Tra-2 Alpha (G241) TRA2A Antibody (A03770-1) Images



Western blot (WB) analysis of Tra-2alpha (G241) pAb at 1:1000 dilution Lane1:A549 whole cell lysate(20ug) Lane2:K562 whole cell lysate(20ug) Lane3:The Kidney tissue lysate of Mouse(40ug) Lane4:The Kidney tissue lysate of Rat(40ug)



Immunohistochemistry (IHC) analyzes of Tra-2alpha (G241) pAb in paraffin-embedded human brain tissue.

Submit a product review to Biocompare.com

Submit a review of this product to Biocompare.com to receive a \$20 Amazon.com giftcard! Your reviews help your fellow scientists make the right decisions. Thank you for your contribution.



Anti-Tra-2 Alpha (G241) TRA2A Antibody

For Research Use Only. Not for use in diagnostic procedures.