

Anti-Kinetochore protein Nuf2 Nuf2 Antibody

Catalog Number: A03788

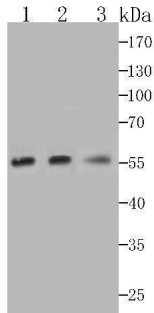
Overview

Product Name	Anti-Kinetochore protein Nuf2 Nuf2 Antibody
Reactive Species	Human
Description	Boster Bio Anti-Kinetochore protein Nuf2 Nuf2 Antibody catalog # A03788. Tested in WB,Flow Cytometry applications. This antibody reacts with Human.
Application	Flow Cytometry, WB
Clonality	Polyclonal
Formulation	Rabbit IgG, 1mg/ml in PBS with 0.02% sodium azide, 50% glycerol, pH7.2
Storage Instructions	Store at -20°C for one year. For short term storage and frequent use, store at 4°C for up to one month. Avoid repeated freeze-thaw cycles.
Host	Rabbit
Uniprot ID	Q9BZD4

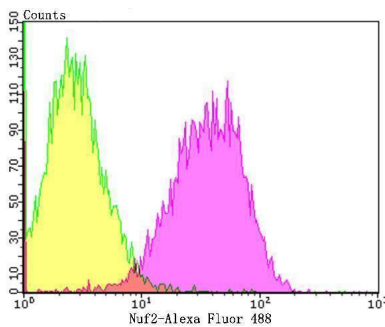
Technical Details

Immunogen	Recombinant protein within human Nuf2 aa 1-200.
Isotype	IgG
Form	Liquid
Concentration	1 mg/ml
Purification	ProA affinity purified
Suggested Dilutions	WB: 1:500-1:2,000 FC: 1:50-1:100

Anti-Kinetochore protein Nuf2 Nuf2 Antibody (A03788) Images



Western blot analysis of Nuf2 on different cell lysates using anti-Nuf2 at 1/1,000 dilution. Positive control □ Line 1: K562
Line 2: PC-3M Line 3: THP-1



Flow cytometric analysis of A431 cells with Nuf2 antibody at 1/50 dilution (purple) compared with an unlabelled control (cells without incubation with primary antibody; yellow). Alexa Fluor 488-conjugated goat anti-rabbit IgG was used as the secondary antibody.

Submit a product review to Biocompare.com

Submit a review of this product to Biocompare.com to receive a \$20 Amazon.com giftcard! Your reviews help your fellow scientists make the right decisions. Thank you for your contribution.



Anti-Kinetochore protein Nuf2 Nuf2 Antibody

For Research Use Only. Not for use in diagnostic procedures.