

Anti-KIR2DS2 Antibody

Catalog Number: A03789

About KIR2DS2

Killer cell immunoglobulin-like receptors (KIRs) are transmembrane glycoproteins expressed by natural killer cells and subsets of T cells (1). The KIR proteins are classified by the number of extracellular immunoglobulin domains and by whether they have a long (L) or short (S) cytoplasmic domain (2,3). KIR proteins are thought to play an important role in regulation of the immune response (3). KIR2DS2 downregulates the cytotoxicity of NK cells upon recognition of specific class I major histocompatibility complex (MHC) molecules on target cells and is a receptor on natural killer (NK) cells for HLA-C alleles (3,4).

Overview

Product Name	Anti-KIR2DS2 Antibody
Reactive Species	Human
Description	Boster Bio Anti-KIR2DS2 Antibody (Catalog # A03789). Tested in ELISA, WB, IF, ICC applications. This antibody reacts with Human.
Application	ELISA, IF, ICC, WB
Clonality	Polyclonal
Formulation	KIR2DS2 antibody is supplied in PBS containing 0.02% sodium azide.
Storage Instructions	KIR2DS2 antibody can be stored at 4°C up to one year. Antibodies should not be exposed to prolonged high temperatures.
Host	Rabbit
Uniprot ID	P43631

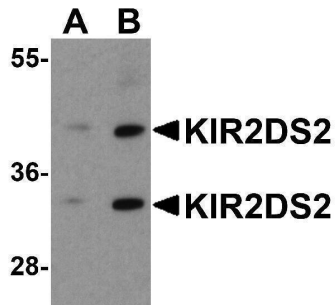
Technical Details

Immunogen	KIR2DS2 antibody was raised against an 18 amino acid peptide near the carboxy terminus of human KIR2DS2. The immunogen is located within the last 50 amino acids of KIR2DS2.
Predicted Reactive Species	Bovine, Chicken, Rat
Cross Reactivity	KIR2DS2 antibody is human specific. Multiple isoforms are known to exist.
Isotype	IgG
Form	Liquid
Concentration	1 mg/mL
Purification	KIR2DS2 antibody is affinity chromatography purified via peptide column.

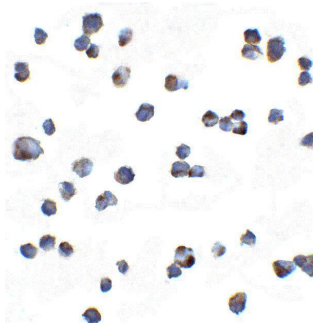
Suggested Dilutions

KIR2DS2 antibody can be used for detection of KIR2DS2 by Western blot at 1 - 2 ug/ml. For immunofluorescence start at 20 ug/mL.
Antibody validated: Western Blot in human samples; Immunocytochemistry in human samples and Immunofluorescence in human samples. All other applications and species not yet tested. Optimal dilutions for each application should be determined by the researcher.

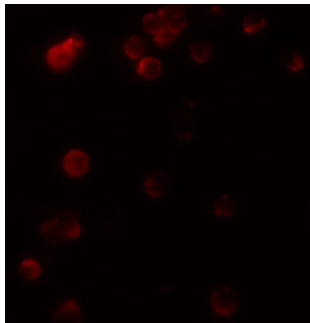
Anti-KIR2DS2 Antibody (A03789) Images



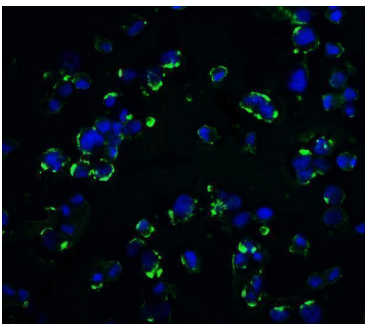
Western blot analysis of KIR2DS2 in 293 cell lysate with KIR2DS2 antibody at (A) 1 and (B) 2 ug/ml.



Immunocytochemistry of KIR2DS2 in Hek293 cells with KIR2DS2 antibody at 5 ug/mL.



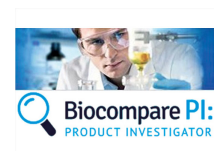
Immunofluorescence of KIR2DS2 in 293 cells with KIR2DS2 antibody at 20 ug/ml.



Immunofluorescence of KIR2DS2 in Hek293 cells with KIR2DS2 antibody at 20 ug/mL. Green: KIR2DS2 Antibody (A03789) Blue: DAPI staining

Submit a product review to [Biocompare.com](https://www.biocompare.com)

Submit a review of this product to [Biocompare.com](https://www.biocompare.com) to receive a \$20 Amazon.com giftcard! Your reviews help your fellow scientists make the right decisions. Thank you for your contribution.



Anti-KIR2DS2 Antibody

For Research Use Only. Not for use in diagnostic procedures.