

## Anti-Synapsin I (phospho-S62) SYN1 Antibody

Catalog Number: A03794S62

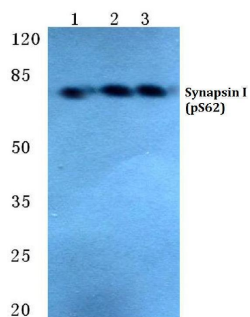
### Overview

Product Name	Anti-Synapsin I (phospho-S62) SYN1 Antibody
Reactive Species	Human, Mouse, Rat
Description	Boster Bio Anti-Synapsin I (phospho-S62) SYN1 Antibody catalog # A03794S62. Tested in WB applications. This antibody reacts with Human, Mouse, Rat.
Application	WB
Clonality	Polyclonal
Formulation	Rabbit IgG, 1mg/ml in PBS with 0.02% sodium azide, 50% glycerol, pH7.2
Storage Instructions	Store at -20°C for one year. For short term storage and frequent use, store at 4°C for up to one month. Avoid repeated freeze-thaw cycles.
Host	Rabbit
Uniprot ID	P17600

### Technical Details

Immunogen	Synthetic phosphopeptide derived from human Synapsin I around the phosphorylation site of Serine 62.
Isotype	IgG
Form	Liquid
Concentration	1 mg/ml
Purification	The antibody was affinity-purified from rabbit antiserum by affinity-chromatography using epitope-specific immunogen and the purity is > 95% (by SDS-PAGE).
Suggested Dilutions	WB: 1:500-1:1000

## Anti-Synapsin I (phospho-S62) SYN1 Antibody (A03794S62) Images



Western blot (WB) analysis of p-SYN1 (S62) polyclonal antibody at 1:500 dilution Lane1:HEK293T cell lysate treated with PMA(100nM,30min) Lane2:Raw264.7 cell lysate treated with PMA(00nM,30min) Lane3:H9C2 cell lysate treated with PMA(100nM,30min)

### Submit a product review to Biocompare.com

Submit a review of this product to Biocompare.com to receive a \$20 Amazon.com giftcard! Your reviews help your fellow scientists make the right decisions. Thank you for your contribution.



Anti-Synapsin I (phospho-S62) SYN1 Antibody

For Research Use Only. Not for use in diagnostic procedures.