

Anti-Hif3 alpha Antibody

Catalog Number: A03805-1

About HIF3A

One of the most important factors in the cellular response to hypoxia is hypoxia-inducible factor (HIF), which transcriptionally activates genes encoding proteins that mediate adaptive responses to reduced oxygen availability. HIF is a member of the basic helix-loop-helix (bHLH) superfamily, in which the HLH domain mediates subunit dimerization while the basic domain binds to DNA. HIF binds to the hypoxia-responsive elements (HRE) located within the enhancer/promoter of hypoxia-inducible target genes and hence inhibits HRE-driven transcriptional activation. HIF target genes play critical roles in metabolism, angiogenesis, cell proliferation, and cell survival; in fact, HIF3-a may be a marker for tumor growth and apoptosis. Hif3 may participate in disorders with the cornea, lung, and heart. Anti-Hif3 alpha Antibody is useful for researchers interested in transcription factors, DNA binding, and Epilepsy research.

Overview

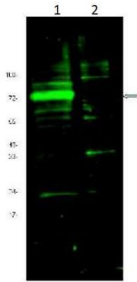
Product Name	Anti-Hif3 alpha Antibody
Reactive Species	Mouse
Description	Boster Bio Anti-Hif3 alpha Antibody (Catalog # A03805-1). Tested in ELISA, WB applications. This antibody reacts with Mouse.
Application	ELISA, WB
Clonality	Polyclonal
Formulation	0.02 M Potassium Phosphate, 0.15 M Sodium Chloride, pH 7.2, 0.01% (w/v) Sodium Azide
Storage Instructions	Store vial at -20°C prior to opening. Aliquot contents and freeze at -20°C or below for extended storage. Avoid cycles of freezing and thawing. Centrifuge product if not completely clear after standing at room temperature. This product is stable for several weeks at 4°C as an undiluted liquid. Dilute only prior to immediate use. Expiration date is one (1) year from date of opening. (Ship on dry ice.)
Host	Rabbit
Uniprot ID	Q0VBL6

Technical Details

Immunogen	This affinity purified antibody was prepared from whole rabbit serum produced by repeated immunizations with a synthetic peptide corresponding to an internal region near aa 575-600 of mouse Hif3 a (Hypoxia Inducible Factor).
Predicted Reactive Species	Chimpanzee
Isotype	IgG
Form	Liquid (sterile filtered)

Concentration	1.2 mg/mL by UV absorbance at 280 nm
Purification	This affinity-purified antibody is directed against mouse Hif3alpha protein. The product was affinity purified from monospecific antiserum by immunoaffinity purification. A BLAST analysis was used to suggest cross-reactivity with Hif3a protein from mouse (100% homology) and rat (91% homology). Reactivity against human Hif3a is not expected as only 75% homology for the immunizing sequence is noted. No reactivity is expected against other forms of Hif proteins. Reactivity against homologues from other sources is not known.
Suggested Dilutions	ELISA: 1:14,000 - 1:80,000 WB: 1:1,000 - 1:8,000 This affinity-purified antibody has been tested for use in ELISA and western blot. Specific conditions for reactivity should be optimized by the end user. Expect a band approximately 72 kDa in size corresponding to Hif3 alpha protein by western blotting in the appropriate cell lysate or extract. This antibody is expected to cross-react with mouse and rat Hif3 alpha due to sequence homology.

Anti-Hif3 alpha Antibody (A03805-1) Images



Western blot using Boster's Affinity Purified Anti-Hif3A antibody shows detection of a band ~72 kDa corresponding to mouse Hif3A [arrowhead]. Approximately 10 μ g of a CoCl₂ treated 3T3 cell lysate [lane 1] and control 3T3 cell lysate [lane 2] were separated by 4-20% SDS-PAGE and transferred onto nitrocellulose. Treatment of exponentially growing 3T3 cells with 130 μ M CoCl₂ for 6 h at 37° C effectively mimics hypoxia. After blocking the membrane was probed overnight at 4° C with the primary antibody diluted to 1:1,600. The membrane was washed and reacted with a 1:10,000 dilution of IRDye™ 800 conjugated Gt-a-Rabbit IgG [H&L] MX for 45 min at room temperature. IRDye™ 800 fluorescence image was captured using the Odyssey® Infrared Imaging System developed by LI-COR. IRDye is a trademark of LI-COR, Inc. Other detection systems will yield similar results.

Submit a product review to Biocompare.com

Submit a review of this product to Biocompare.com to receive a \$20 Amazon.com giftcard! Your reviews help your fellow scientists make the right decisions. Thank you for your contribution.



Anti-Hif3 alpha Antibody

For Research Use Only. Not for use in diagnostic procedures.