

## Anti-DEPTOR Antibody

Catalog Number: A03811

### About DEPTOR

DEPTOR is an mTOR (mammalian target of rapamycin)-interacting protein whose expression is negatively regulated by mTOR complex 1 (mTORC1) and mTORC2 (1). Loss of DEPTOR activates RP6SK1, Akt1, and SGK1, promotes cell growth and survival, and activates mTORC1 and mTORC2 kinase activities. DEPTOR expression is low in most cancers, but is often elevated in multiple myelomas (1). In response to stimulation by mitogens, DEPTOR is rapidly phosphorylated leading to its ubiquitination and degradation, allowing mTOR to generate an auto-amplification loop to promote its own full activation (2).

### Overview

Product Name	Anti-DEPTOR Antibody
Reactive Species	Human, Mouse, Rat
Description	Boster Bio Anti-DEPTOR Antibody (Catalog # A03811). Tested in ELISA, WB, IHC-P applications. This antibody reacts with Human, Mouse, Rat.
Application	ELISA, IHC-P, WB
Clonality	Polyclonal
Formulation	DEPTOR Antibody is supplied in PBS containing 0.02% sodium azide.
Storage Instructions	DEPTOR antibody can be stored at 4°C for three months and -20°C, stable for up to one year.
Host	Rabbit
Uniprot ID	Q8TB45

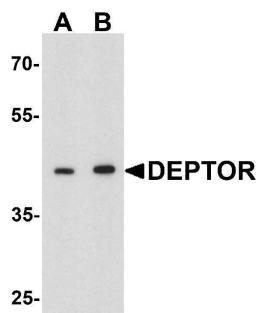
### Technical Details

Immunogen	DEPTOR antibody was raised against a 16 amino acid peptide near the center of human DEPTOR. The immunogen is located within amino acids 220 - 270 of DEPTOR.
Predicted Reactive Species	Bovine, Chicken, Rat
Cross Reactivity	DEPTOR antibody is human, mouse and rat reactive. At least three isoforms of DEPTOR are known to exist; this antibody will detect all three isoforms.
Isotype	IgG
Form	Liquid
Concentration	1 mg/mL
Purification	DEPTOR antibody is affinity chromatography purified via peptide column.

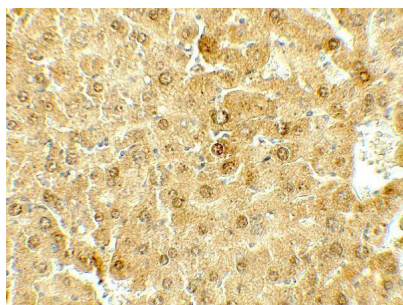
Suggested Dilutions

DEPTOR antibody can be used for detection of DEPTOR by Western blot at 1 - 2 ug/ml. Antibody can also be used for Immunohistochemistry at 5 ug/mL.  
Antibody validated: Western Blot in mouse samples and Immunohistochemistry in mouse samples. All other applications and species not yet tested. Optimal dilutions for each application should be determined by the researcher.

## Anti-DEPTOR Antibody (A03811) Images



Western blot analysis of DEPTOR in mouse liver tissue lysate with DEPTOR antibody at (A) 1 and (B) 2 ug/ml.



Immunohistochemistry of DEPTOR in mouse liver tissue with DEPTOR antibody at 5 ug/mL.

### Submit a product review to Biocompare.com

Submit a review of this product to Biocompare.com to receive a \$20 Amazon.com giftcard! Your reviews help your fellow scientists make the right decisions. Thank you for your contribution.



Anti-DEPTOR Antibody

For Research Use Only. Not for use in diagnostic procedures.