

## Anti-Protein disulfide-isomerase A6 PDIA6 Antibody

Catalog Number: A03813-1

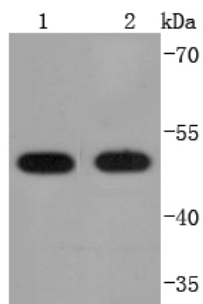
### Overview

Product Name	Anti-Protein disulfide-isomerase A6 PDIA6 Antibody
Reactive Species	Human, Mouse, Rat
Description	Boster Bio Anti-Protein disulfide-isomerase A6 PDIA6 Antibody catalog # A03813-1. Tested in WB,ICC/IF,Flow Cytometry applications. This antibody reacts with Human,Mouse,Rat.
Application	Flow Cytometry, IF, ICC, WB
Clonality	Polyclonal
Formulation	Rabbit IgG, 1mg/ml in PBS with 0.02% sodium azide, 50% glycerol, pH7.2
Storage Instructions	Store at -20°C for one year. For short term storage and frequent use, store at 4°C for up to one month. Avoid repeated freeze-thaw cycles.
Host	Rabbit
Uniprot ID	Q15084

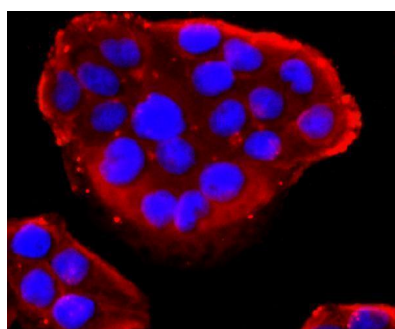
### Technical Details

Immunogen	recombinant protein
Isotype	IgG
Form	Liquid
Concentration	1 mg/ml
Purification	ProA affinity purified
Suggested Dilutions	WB: 1:1,000-1:2,000 FC: 1:50-1:100 ICC: 1:100-1:500

## Anti-Protein disulfide-isomerase A6 PDIA6 Antibody (A03813-1) Images



Western blot analysis of PDIA6 on different lysates using anti-PDIA6 antibody at 1/1,000 dilution. Positive control: Lane 1: HepG2 Lane 2: K562



ICC staining PDIA6 in HeLa cells (red). The nuclear counter stain is DAPI (blue). Cells were fixed in paraformaldehyde, permeabilised with 0.25% Triton X100/PBS.

### Submit a product review to [Biocompare.com](https://www.biocompare.com)

Submit a review of this product to [Biocompare.com](https://www.biocompare.com) to receive a \$20 Amazon.com giftcard! Your reviews help your fellow scientists make the right decisions. Thank you for your contribution.



Anti-Protein disulfide-isomerase A6 PDIA6 Antibody

For Research Use Only. Not for use in diagnostic procedures.