

## Anti-Atrophin-1 ATN1 Antibody

Catalog Number: A03828-2

### About ATN1

Transcriptional corepressor. Recruits NR2E1 to repress transcription. Promotes vascular smooth cell (VSMC) migration and orientation By similarity. Corepressor of MTG8 transcriptional repression. Has some intrinsic repression activity which is independent of the number of poly-Asn (polyQ) repeats.

Nagafuchi S., Nat. Genet. 8:177-182(1994).

Onodera O., Am. J. Hum. Genet. 57:1050-1060(1995).

Margolis R.L., Brain Res. Mol. Brain Res. 36:219-226(1996).

### Overview

Product Name	Anti-Atrophin-1 ATN1 Antibody
Reactive Species	Human, Mouse, Rat
Description	Boster Bio Anti-Atrophin-1 ATN1 Antibody catalog # A03828-2. Tested in WB,ICC,IP applications. This antibody reacts with Human,Mouse,Rat.
Application	IP, ICC, WB
Clonality	Polyclonal
Formulation	Rabbit IgG, 1mg/ml in PBS with 0.02% sodium azide, 50% glycerol, pH7.2
Storage Instructions	Store at -20°C for one year. For short term storage and frequent use, store at 4°C for up to one month. Avoid repeated freeze-thaw cycles.
Host	Rabbit
Uniprot ID	P54259

### Technical Details

Immunogen	Synthesized peptide derived from N-terminal of human ATN1.
Predicted Reactive Species	Boar, Bovine, Canine, Golden Hamster
Isotype	IgG
Form	Liquid
Concentration	1 mg/ml
Purification	The antibody was affinity-purified from rabbit antiserum by affinity-chromatography using epitope-specific immunogen and the purity is > 95% (by SDS-PAGE).

**Suggested Dilutions**

Dilute the sample so that the expected range of concentrations fall within the detection range of this kit.

If the expected range of concentration is unknown, a pilot test should be conducted to decide the optimal dilution ratio for your samples.

Some PubMed article(s) citing the expression level of this target are as follows:

Boster Bio's internal QC testing used:

WB: 1:500-1:1000

ICC: 1:50-1:200

IP: 1:50-1:200

## Anti-Atrophin-1 ATN1 Antibody (A03828-2) Images

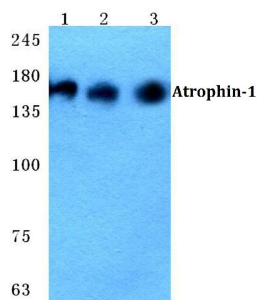


Figure 1. Western blotting validation for Anti-Atrophin-1 ATN1 Antibody A03828-2

Western blot (WB) analysis of Atrophin-1 polyclonal antibody at 1:500 dilution

Lane1:HEK293T cell lysate

Lane2:sp2/0 cell lysate

Lane3:H9C2 cell lysate

Electrophoresis was performed on a SDS-PAGE gel. To determine SDS-PAGE gel concentration

## Submit a product review to Biocompare.com

Submit a review of this product to Biocompare.com to receive a \$20 Amazon.com giftcard! Your reviews help your fellow scientists make the right decisions. Thank you for your contribution.



Anti-Atrophin-1 ATN1 Antibody