

## Anti-Inhibin beta-B Antibody

Catalog Number: A03838

### About INHBB

Hypoxia-inducible factor 3 alpha, also called MOP7, is a protein that in humans is encoded by the HIF3A gene. HIF3A is mapped to 19q13.32. This gene involved in adaptive response to hypoxia. HIF3A suppresses hypoxia-inducible expression of HIF1A and EPAS1. It binds to core DNA sequence 5'-TACGTG-3' within the hypoxia response element (HRE) of target gene promoters. The complex HIF3A-ARNT activates the transcription of reporter genes driven by HRE. This gene functions as an inhibitor of angiogenesis in the cornea.

### Overview

Product Name	Anti-Inhibin beta-B Antibody
Reactive Species	Human, Mouse, Rat
Description	Boster Bio Anti-Inhibin beta-B Antibody catalog # A03838. Tested in IHC, WB applications. This antibody reacts with Human, Mouse, Rat.
Application	IHC, WB
Clonality	Polyclonal
Formulation	Liquid in PBS containing 50% glycerol, 0.5% BSA and 0.02% sodium azide.
Storage Instructions	Store at -20°C for one year. For short term storage and frequent use, store at 4°C for up to one month. Avoid repeated freeze-thaw cycles.
Host	Rabbit
Uniprot ID	P09529

### Technical Details

Immunogen	The immunogen is a synthetic peptide directed towards the N terminal region of human NR2F1
Predicted Reactive Species	Bovine, Pig, Zebrafish
Isotype	IgG
Form	Liquid
Concentration	This antibody's concentration is >0.5mg/ml.
Purification	Immunogen affinity purified
Suggested Dilutions	Dilute the sample so that the expected range of concentrations fall within the detection range of this kit. If the expected range of concentration is unknown, a pilot test should be conducted to decide the optimal dilution ratio for your samples.

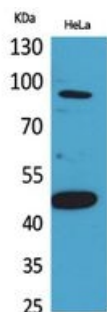
Some PubMed article(s) citing the expression level of this target are as follows:

Boster Bio's internal QC testing used:

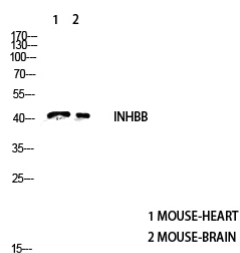
WB, 1:500-1:2000

IHC-P, 1:100-1:300

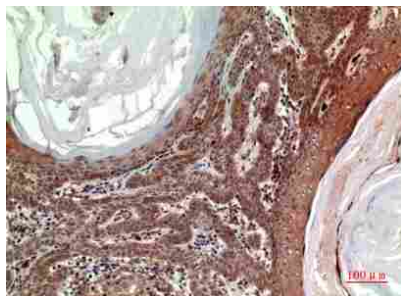
## Anti-Inhibin beta-B Antibody (A03838) Images



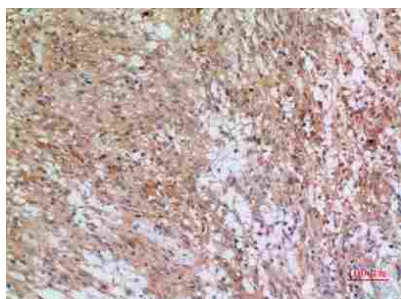
Western Blot (WB) analysis of HeLa cells using Inhibin beta-B Polyclonal antibody.



Western Blot (WB) analysis of Mouse Heart and Mouse Brain using Inhibin beta-B antibody.

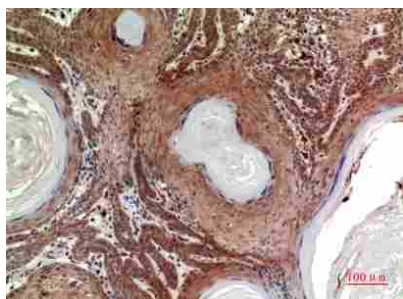


Immunohistochemistry (IHC) analysis of paraffin-embedded Human Skin, antibody was diluted at 1:100.



Immunohistochemistry (IHC) analysis of paraffin-embedded Human Brain, antibody was diluted at 1:100.

Immunohistochemistry (IHC) analysis of paraffin-embedded Human Skin, antibody was diluted at 1:100.



## Submit a product review to Biocompare.com

Submit a review of this product to Biocompare.com to receive a \$20 Amazon.com giftcard! Your reviews help your fellow scientists make the right decisions. Thank you for your contribution.



Anti-Inhibin beta-B Antibody