

Anti-FAS-associated factor 1 FAF1 Antibody

Catalog Number: A03842

About FAF1

Fas-associated protein 1 (FAF1) was initially identified as a Fas-binding pro-apoptotic protein that is component of the death-inducing signaling complex in Fas-mediated apoptosis. FAF1 can also induce apoptosis in the absence of extrinsic death signals when overexpressed although it does not contain typical death motifs such as the death domain, death effector domain, and caspase recruitment domain. Overexpression of FAF1 also decreases the basal level of NF-kappaB activity in transfected 293 cells, inhibits NF-kappaB activity induced by TNF-alpha, IL-1beta and lipopolysaccharide, and prevents NF-kappaB translocation to the nucleus, suggesting that another role of FAF1 is to negatively regulate the activity of NF-kappaB. FAF1 can also interact with the inflammatory signaling PYRIN-containing Apaf-1-like proteins (PYPAFs, also called NALPs) such as PYPAF1, PYPAF2 (NALP2), and PYPAF7, suggesting FAF1 may also be involved in the inflammation pathway. Multiple differentially spliced isoforms of FAF1 are known to exist.

Overview

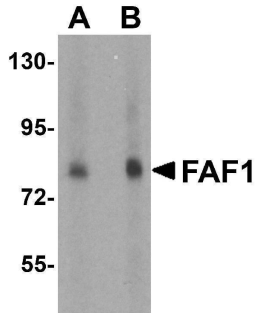
Product Name	Anti-FAS-associated factor 1 FAF1 Antibody
Reactive Species	Human, Mouse, Rat
Description	Boster Bio Anti-FAS-associated factor 1 FAF1 Antibody (Catalog # A03842). Tested in ELISA, WB, IHC-P, IF applications. This antibody reacts with Human, Mouse, Rat.
Application	ELISA, IF, IHC-P, WB
Clonality	Polyclonal
Formulation	FAF1 Antibody is supplied in PBS containing 0.02% sodium azide.
Storage Instructions	FAF1 antibody can be stored at 4°C for three months and -20°C, stable for up to one year. Avoid repeated freeze-thaw cycles. Antibodies should not be exposed to prolonged high temperatures.
Host	Rabbit
Uniprot ID	Q9UNN5

Technical Details

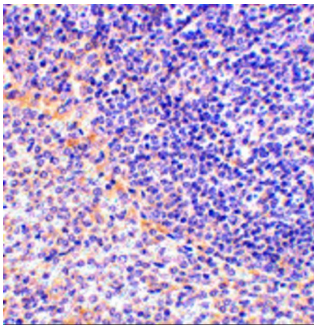
Immunogen	FAF1 antibody was raised against a 19 amino acid synthetic peptide from near the carboxy terminus of human FAF1. The immunogen is located within the last 50 amino acids of FAF1.
Predicted Reactive Species	Mouse
Isotype	IgG
Form	Liquid
Concentration	1 mg/mL

Purification	FAF1 Antibody is affinity chromatography purified via peptide column.
Suggested Dilutions	FAF1 antibody can be used for detection of FAF1 by Western blot at 1 - 2 ug/mL. Antibody can also be used for immunohistochemistry starting at 2.5 ug/mL. For immunofluorescence start at 20 ug/mL. Antibody validated: Western Blot in human samples; Immunohistochemistry in rat samples and Immunofluorescence in rat samples. All other applications and species not yet tested. Optimal dilutions for each application should be determined by the researcher.

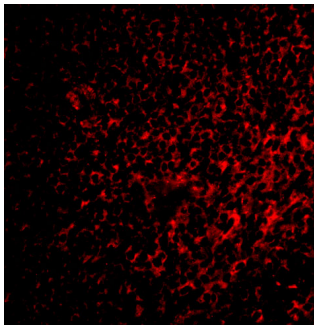
Anti-FAS-associated factor 1 FAF1 Antibody (A03842) Images



Western blot analysis of FAF1 in THP-1 cell lysate with FAF1 antibody at (A) 1 and (B) 2 ug/mL.



Immunohistochemistry of FAF1 in rat spleen tissue with FAF1 antibody at 2.5 ug/mL.



Immunofluorescence of FAF1 in rat spleen tissue with FAF1 antibody at 2 ug/mL.

Submit a product review to [Biocompare.com](https://www.biocompare.com)

Submit a review of this product to [Biocompare.com](https://www.biocompare.com) to receive a \$20 Amazon.com giftcard! Your reviews help your fellow scientists make the right decisions. Thank you for your contribution.



Anti-FAS-associated factor 1 FAF1 Antibody

For Research Use Only. Not for use in diagnostic procedures.