

Anti-Claudin 7/CLDN-7 Antibody Picoband®

Catalog Number: A03851-2

About Cldn7

Claudin-7 is a protein that in humans is encoded by the CLDN7 gene. This gene encodes a member of the claudin family. Claudins are integral membrane proteins and components of tight junction strands. Tight junction strands serve as a physical barrier to prevent solutes and water from passing freely through the paracellular space between epithelial or endothelial cell sheets, and also play critical roles in maintaining cell polarity and signal transductions. This gene is expressed constitutively in the mammary epithelium throughout development, and might be involved in vesicle trafficking to the basolateral membrane. It is essential for NaCl homeostasis in distal nephrons. The knockout mice lacking this gene showed severe salt wasting, chronic dehydration, and growth retardation, and died within 12 days after birth. Alternatively spliced transcript variants have been found for this gene.

Overview

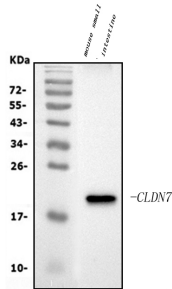
Product Name	Anti-Claudin 7/CLDN-7 Antibody Picoband®
Reactive Species	Mouse
Description	Boster Bio Anti-Claudin 7/CLDN-7 Antibody Picoband® catalog # A03851-2. Tested in WB applications. This antibody reacts with Mouse. The brand Picoband indicates this is a premium antibody that guarantees superior quality, high affinity, and strong signals with minimal background in Western blot applications. Only our best-performing antibodies are designated as Picoband, ensuring unmatched performance.
Application	WB
Clonality	Polyclonal
Formulation	Each vial contains 4mg Trehalose, 0.9mg NaCl, 0.2mg Na2HPO4, 0.005mg NaN3.
Storage Instructions	Store at -20°C for one year from date of receipt. After reconstitution, at 4°C for one month. It can also be aliquotted and stored frozen at -20°C for six months. Avoid repeated freeze-thaw cycles.
Host	Rabbit
Uniprot ID	Q9Z261

Technical Details

Immunogen	A synthetic peptide corresponding to a sequence at the C-terminus of mouse Claudin 7/CLDN-7, which shares 87% and 100% amino acid (aa) sequence identity with human and rat Claudin 7/CLDN-7, respectively.
Recommended Detection Systems	Boster recommends Enhanced Chemiluminescent Kit with anti-Rabbit IgG (EK1002) for Western blot.
Cross Reactivity	No cross-reactivity with other proteins.

Isotype	Rabbit IgG
Form	Lyophilized
Concentration	Adding 0.2 ml of distilled water will yield a concentration of 500 ug/ml.
Purification	Immunogen affinity purified.
Suggested Dilutions	Western blot, 0.25-0.5ug/ml, Mouse

Anti-Claudin 7/CLDN-7 Antibody Picoband® (A03851-2) Images



Western blot analysis of Claudin 7/CLDN-7 using anti-Claudin 7/CLDN-7 antibody (A03851-2). Electrophoresis was performed on a 5-20% SDS-PAGE gel at 70V (Stacking gel) / 90V (Resolving gel) for 2-3 hours. The sample well of each lane was loaded with 50ug of sample under reducing conditions. Lane 1: mouse small intestine tissue lysates. r> After Electrophoresis, proteins were transferred to a Nitrocellulose membrane at 150mA for 50-90 minutes. Blocked the membrane with 5% Non-fat Milk/ TBS for 1.5 hour at RT. The membrane was incubated with rabbit anti-Claudin 7/CLDN-7 antigen affinity purified polyclonal antibody (Catalog # A03851-2) at 0.5 ug/mL overnight at 4°C, then washed with TBS-0.1%Tween 3 times with 5 minutes each and probed with a goat anti-rabbit IgG-HRP secondary antibody at a dilution of 1:5000 for 1.5 hour at RT. The signal is developed using an Enhanced Chemiluminescent detection (ECL) kit (Catalog # EK1002) with Tanon 5200 system. A specific band was detected for Claudin 7/CLDN-7 at approximately 22KD. The expected band size for Claudin 7/CLDN-7 is at 22KD.

Submit a product review to Biocompare.com

Submit a review of this product to Biocompare.com to receive a \$20 Amazon.com giftcard! Your reviews help your fellow scientists make the right decisions. Thank you for your contribution.



Anti-Claudin 7/CLDN-7 Antibody

For Research Use Only. Not for use in diagnostic procedures.