

## Anti-SkiP SNW1 Antibody

Catalog Number: A03854

### About SNW1

TGF-beta and the bone morphogenic proteins (BMPs) are key signaling proteins that regulate numerous cellular processes such as embryonic development and tumorigenesis. Both signal through the Smad protein family and are negatively regulated by Ski and SnoN, two related proto-oncoproteins. Ski functions by binding to the Smad proteins activated by TGF-beta and the (BMPs) and preventing their phosphorylation, inhibiting their ability to bind DNA and activate the transcription of downstream genes. SkiP was originally identified as a Ski-interacting protein and was later found to augment the signals induced by TGF-beta but inhibit transcription induced by BMP-2 in C2C12 cells, suggesting that SkiP is a key player in the signaling cascades initiated by TGF-beta and the BMP protein family.

### Overview

Product Name	Anti-SkiP SNW1 Antibody
Reactive Species	Human, Mouse, Rat
Description	Boster Bio Anti-SkiP SNW1 Antibody (Catalog # A03854). Tested in ELISA, WB, IF applications. This antibody reacts with Human, Mouse, Rat.
Application	ELISA, IF, WB
Clonality	Polyclonal
Formulation	SkiP Antibody is supplied in PBS containing 0.02% sodium azide.
Storage Instructions	SkiP antibody can be stored at 4°C for three months and -20°C, stable for up to one year. Avoid repeated freeze-thaw cycles. Antibodies should not be exposed to prolonged high temperatures.
Host	Rabbit
Uniprot ID	Q13573

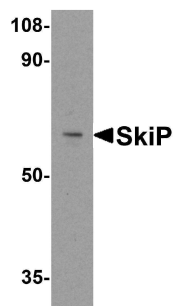
### Technical Details

Immunogen	SkiP antibody was raised against a 16 amino acid synthetic peptide from near the carboxy terminus of human SkiP. The immunogen is located within the last 50 amino acids of SkiP.
Predicted Reactive Species	Bovine
Isotype	IgG
Form	Liquid
Concentration	1 mg/ml
Purification	SkiP Antibody is affinity chromatography purified via peptide column.

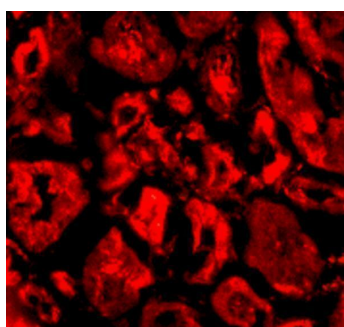
**Suggested Dilutions**

SkiP antibody can be used for detection of SkiP by Western blot at 0.5 ug/mL. Antibody can also be used for immunohistochemistry starting at 20 ug/mL. For immunofluorescence start at 20 ug/mL. Antibody validated: Western Blot in mouse samples and Immunofluorescence in human samples. All other applications and species not yet tested. Optimal dilutions for each application should be determined by the researcher.

## Anti-SkiP SNW1 Antibody (A03854) Images



Western blot analysis of SkiP in mouse skeletal muscle tissue lysate with SkiP antibody at 0.5 ug/ml.



Immunofluorescence of Ski in human kidney tissue with Ski antibody at 20 ug/mL.

### Submit a product review to [Biocompare.com](https://www.biocompare.com)

Submit a review of this product to [Biocompare.com](https://www.biocompare.com) to receive a \$20 Amazon.com giftcard! Your reviews help your fellow scientists make the right decisions. Thank you for your contribution.



Anti-SkiP SNW1 Antibody

For Research Use Only. Not for use in diagnostic procedures.