

## Anti-ATRIP Antibody

Catalog Number: A03862

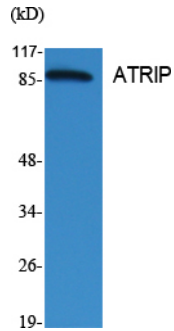
### Overview

Product Name	Anti-ATRIP Antibody
Reactive Species	Human, Mouse, Rat
Description	Boster Bio Anti-ATRIP Antibody catalog # A03862. Tested in WB, IHC, IF, ELISA applications. This antibody reacts with Human, Mouse, Rat.
Application	ELISA, IF, IHC, WB
Clonality	Polyclonal
Formulation	Liquid in PBS containing 50% glycerol, 0.5% stabilizing protein and 0.02% sodium azide. *This antibody is supplied in a stabilized formulation. Compatibility with conjugation reactions depends on the chemistry of the conjugation method used. For conjugation methods that are not compatible with the stabilizing components present in this formulation, a carrier-free antibody format is required.
Storage Instructions	Store at -20°C for one year. For short term storage and frequent use, store at 4°C for up to one month. Avoid repeated freeze-thaw cycles.
Host	Rabbit
Uniprot ID	Q8WXE1

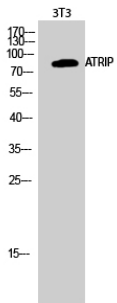
### Technical Details

Immunogen	The antiserum was produced against synthesized peptide derived from human ATRIP. AA range:34-83
Isotype	IgG
Form	Liquid
Concentration	1 mg/ml
Purification	Immunogen affinity purified
Suggested Dilutions	WB 1:500-1:2000 IHC 1:100-1:300 IF 1:200-1:1000 ELISA 1:5000

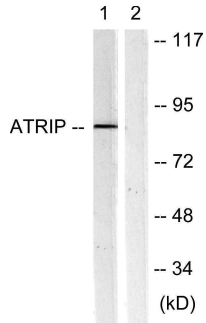
## Anti-ATRIP Antibody (A03862) Images



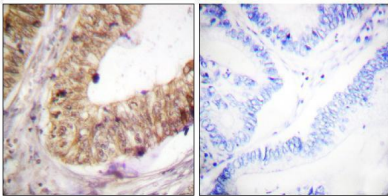
Western Blot analysis of various cells using ATRIP Polyclonal Antibody cells nucleus extracted by Minute TM Cytoplasmic and Nuclear Fractionation kit .



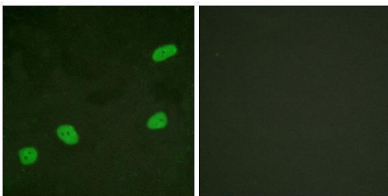
Western Blot analysis of 3T3 cells using ATRIP Polyclonal Antibody cells nucleus extracted by Minute TM Cytoplasmic and Nuclear Fractionation kit .



Western blot analysis of lysates from NIH/3T3 cells, using ATRIP Antibody. The lane on the right is blocked with the synthesized peptide.



Immunohistochemistry analysis of paraffin-embedded human colon carcinoma tissue, using ATRIP Antibody. The picture on the right is blocked with the synthesized peptide.



Immunofluorescence analysis of HeLa cells, using ATRIP Antibody. The picture on the right is blocked with the synthesized peptide.

Submit a product review to [Biocompare.com](https://www.biocompare.com)

Submit a review of this product to [Biocompare.com](https://www.biocompare.com) to receive a \$20 Amazon.com giftcard! Your



reviews help your fellow scientists make the right decisions. Thank you for your contribution.

### Anti-ATRIP Antibody

For Research Use Only. Not for use in diagnostic procedures.