

## Anti-Phospho-ATRIP (S68) Antibody

Catalog Number: A03862S68

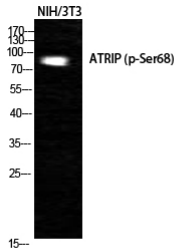
### Overview

Product Name	Anti-Phospho-ATRIP (S68) Antibody
Reactive Species	Human, Mouse, Rat
Description	Boster Bio Anti-Phospho-ATRIP (S68) Antibody catalog # A03862S68. Tested in WB, ELISA applications. This antibody reacts with Human, Mouse, Rat.
Application	ELISA, WB
Clonality	Polyclonal
Formulation	Liquid in PBS containing 50% glycerol, 0.5% stabilizing protein and 0.02% sodium azide. *This antibody is supplied in a stabilized formulation. Compatibility with conjugation reactions depends on the chemistry of the conjugation method used. For conjugation methods that are not compatible with the stabilizing components present in this formulation, a carrier-free antibody format is required.
Storage Instructions	Store at -20°C for one year. For short term storage and frequent use, store at 4°C for up to one month. Avoid repeated freeze-thaw cycles.
Host	Rabbit
Uniprot ID	Q8WXE1

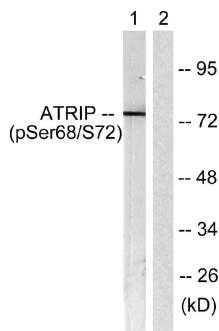
### Technical Details

Immunogen	The antiserum was produced against synthesized peptide derived from human ATRIP around the phosphorylation site of Ser68. AA range:34-83
Isotype	IgG
Form	Liquid
Concentration	1 mg/ml
Purification	The antibody was affinity-purified from rabbit antiserum by affinity-chromatography using epitope-specific immunogen.
Suggested Dilutions	WB 1:500-1:2000 ELISA 1:40000

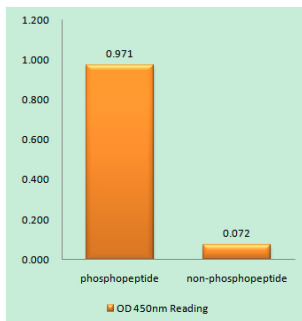
## Anti-Phospho-ATRIP (S68) Antibody (A03862S68) Images



Western Blot analysis of NIH-3T3 cells using Phospho-ATRIP (S68) Polyclonal Antibody cells nucleus extracted by Minute TM Cytoplasmic and Nuclear Fractionation kit .



Western blot analysis of lysates from NIH/3T3 cells, using ATRIP (Phospho-Ser68) Antibody. The lane on the right is blocked with the phospho peptide.



Enzyme-Linked Immunosorbent Assay (Phospho-ELISA) for Immunogen Phosphopeptide (Phospho-left) and Non-Phosphopeptide (Phospho-right), using ATRIP (Phospho-Ser68) Antibody

### Submit a product review to Biocompare.com

Submit a review of this product to Biocompare.com to receive a \$20 Amazon.com giftcard! Your reviews help your fellow scientists make the right decisions. Thank you for your contribution.



### Anti-Phospho-ATRIP (S68) Antibody

For Research Use Only. Not for use in diagnostic procedures.