

## Anti-Phospho-C/EBP epsilon (T74) CEBPE Antibody

Catalog Number: A03884T74

### About CEBPE

Required for transcriptional activation subsequent to the assembly of the preinitiation complex. By similarity. Component of the Mediator complex, a coactivator involved in the regulated transcription of nearly all RNA polymerase II-dependent genes. Mediator functions as a bridge to convey information from gene-specific regulatory proteins to the basal RNA polymerase II transcription machinery. Mediator is recruited to promoters by direct interactions with regulatory proteins and serves as a scaffold for the assembly of a functional preinitiation complex with RNA polymerase II and the general transcription factors. Required for transcriptional activation by adenovirus E1A protein. Required for ELK1-dependent transcriptional activation in response to activated Ras signaling.

Wiemann S., Genome Res. 11:422-435(2001).

Mungall A.J., Nature 425:805-811(2003).

Akoulitchev S., Nature 407:102-106(2000).

### Overview

|                      |   |
|----------------------|---|
| Product Name         | Anti-Phospho-C/EBP epsilon (T74) CEBPE Antibody   |
| Reactive Species     | Human   |
| Description          | Boster Bio Anti-Phospho-C/EBP epsilon (T74) CEBPE Antibody catalog # A03884T74. Tested in ELISA, IF, IHC, WB applications. This antibody reacts with Human. |
| Application          | ELISA, IF, IHC, WB  |
| Clonality            | Polyclonal  |
| Formulation          | Liquid in PBS containing 50% glycerol, 0.5% BSA and 0.02% sodium azide.   |
| Storage Instructions | Store at -20°C for one year. For short term storage and frequent use, store at 4°C for up to one month. Avoid repeated freeze-thaw cycles.                  |
| Host                 | Rabbit  |
| Uniprot ID           | Q15744  |

### Technical Details

|                            |  |
|----------------------------|--|
| Immunogen                  | Synthesized peptide derived from human C/EBP epsilon around the phosphorylation site of T74. |
| Predicted Reactive Species | Boar, Bovine, Canine, Golden Hamster   |
| Isotype                    | IgG  |
| Form                       | Liquid   |
|                            |  |

|                     |  |
|---------------------|--|
| Concentration       | 1 mg/ml  |
| Purification        | The antibody was affinity-purified from rabbit antiserum by affinity-chromatography using epitope-specific immunogen.  |
| Suggested Dilutions | <p>Dilute the sample so that the expected range of concentrations fall within the detection range of this kit.</p> <p>If the expected range of concentration is unknown, a pilot test should be conducted to decide the optimal dilution ratio for your samples.</p> <p>Some PubMed article(s) citing the expression level of this target are as follows:</p> <p>Boster Bio's internal QC testing used:</p> <p>WB 1:500-1:2000<br/>IHC 1:100-1:300<br/>IF 1:200-1:1000<br/>ELISA 1:20000</p> |

## Anti-Phospho-C/EBP epsilon (T74) CEBPE Antibody (A03884T74) Images

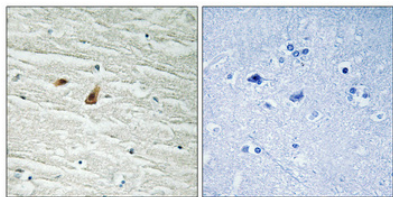


Figure 1. Immunohistochemistry validation of CEBPE using Anti-Phospho-C/EBP epsilon (T74) CEBPE Antibody (A03884T74).

Immunohistochemical analysis of paraffin-embedded Human brain. Antibody was diluted at 1:100 (4°C)

### Submit a product review to Biocompare.com

Submit a review of this product to Biocompare.com to receive a \$20 Amazon.com giftcard! Your reviews help your fellow scientists make the right decisions. Thank you for your contribution.



Anti-Phospho-C/EBP epsilon (T74) CEBPE Antibody