

## Anti-ZIP1 SLC39A1 Antibody

Catalog Number: A03886

### About SLC39A1

ZIP1, also known as ZIRTL (zinc-iron regulated transporter-like), is the first mammalian member of a family of divalent ion transporters. Zinc is an essential ion for cells and plays significant roles in the growth, development, and differentiation. ZIP1 expression is markedly downregulated in a number of cancerous tissues and is thought to function as a tumor suppressor gene in prostate cancer. More recent studies have shown that overexpression of ZIP1 and concomitant increased levels of intracellular zinc in PC-3 cells cause a significant inhibition of NF-kappaB, leading to down-regulation of the antiapoptotic protein Bcl-2, Bcl-XL, and the apoptosis inhibitor XIAP, reducing the malignant potential of prostate cancer cells in vitro and in vivo.

### Overview

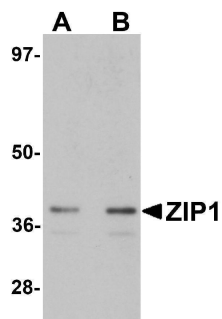
Product Name	Anti-ZIP1 SLC39A1 Antibody
Reactive Species	Human, Mouse
Description	Boster Bio Anti-ZIP1 SLC39A1 Antibody (Catalog # A03886). Tested in ELISA, WB, IHC-P, IF applications. This antibody reacts with Human, Mouse.
Application	ELISA, IF, IHC-P, WB
Clonality	Polyclonal
Formulation	ZIP1 Antibody is supplied in PBS containing 0.02% sodium azide.
Storage Instructions	ZIP1 antibody can be stored at 4°C for three months and -20°C, stable for up to one year. Avoid repeated freeze-thaw cycles. Antibodies should not be exposed to prolonged high temperatures.
Host	Rabbit
Uniprot ID	Q9NY26

### Technical Details

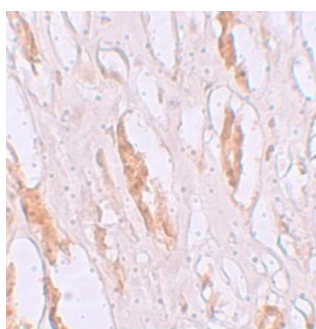
Immunogen	ZIP1 antibody was raised against a 16 amino acid synthetic peptide near the amino terminus of human ZIP1. The immunogen is located within amino acids 40 - 90 of ZIP1.
Predicted Reactive Species	Bovine
Cross Reactivity	At least two isoforms of ZIP1 are known to exist; this antibody will detect both isoforms. ZIP1 antibody is predicted not to cross-react with other ZIP family proteins.
Isotype	IgG
Form	Liquid
Concentration	1 mg/mL

Purification	ZIP1 Antibody is affinity chromatography purified via peptide column.
Suggested Dilutions	ZIP1 antibody can be used for detection of ZIP1 by Western blot at 1 - 2 ug/mL. Antibody can also be used for immunohistochemistry starting at 2.5 ug/mL. For immunofluorescence start at 20 ug/mL. Antibody validated: Western Blot in mouse samples; Immunohistochemistry in human samples and Immunofluorescence in human samples. All other applications and species not yet tested. Optimal dilutions for each application should be determined by the researcher.

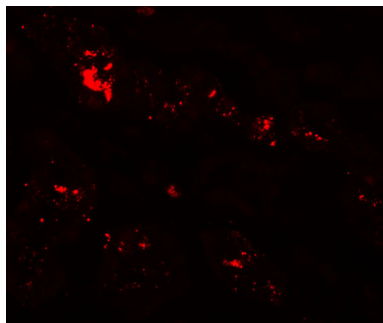
## Anti-ZIP1 SLC39A1 Antibody (A03886) Images



Western blot analysis of ZIP1 in mouse kidney tissue lysate with ZIP1 antibody at (A) 1 and (B) 2 ug/mL.



Immunohistochemistry of ZIP1 in human kidney tissue with ZIP1 antibody at 2.5 ug/mL.



Immunofluorescence of ZIP1 in human kidney tissue with ZIP1 antibody at 20 ug/mL.

### Submit a product review to [Biocompare.com](https://www.biocompare.com)

Submit a review of this product to [Biocompare.com](https://www.biocompare.com) to receive a \$20 Amazon.com giftcard! Your reviews help your fellow scientists make the right decisions. Thank you for your contribution.



Anti-ZIP1 SLC39A1 Antibody

For Research Use Only. Not for use in diagnostic procedures.