

Anti-Cyclin A (W250) CCNA1 Antibody

Catalog Number: A03889-3

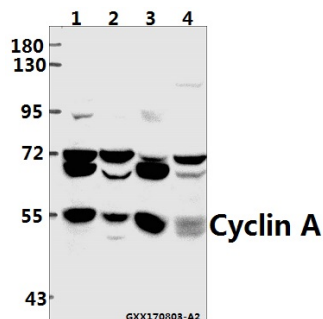
Overview

Product Name	Anti-Cyclin A (W250) CCNA1 Antibody
Reactive Species	Human, Mouse, Rat
Description	Boster Bio Anti-Cyclin A (W250) CCNA1 Antibody catalog # A03889-3. Tested in WB,IHC,IF applications. This antibody reacts with Human,Mouse,Rat.
Application	IF, IHC, WB
Clonality	Polyclonal
Formulation	Rabbit IgG, 1mg/ml in PBS with 0.02% sodium azide, 50% glycerol, pH7.2
Storage Instructions	Store at -20°C for one year. For short term storage and frequent use, store at 4°C for up to one month. Avoid repeated freeze-thaw cycles.
Host	Rabbit
Uniprot ID	P78396/P20248

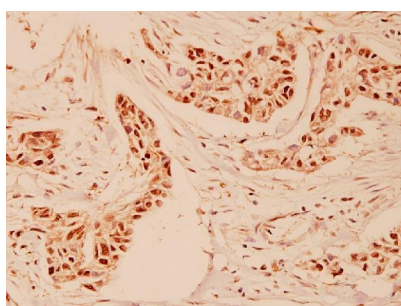
Technical Details

Immunogen	Synthetic peptide, corresponding to amino acids 220-270 of Human Cyclin A.
Isotype	IgG
Form	Liquid
Concentration	1 mg/ml
Purification	The antibody was affinity-purified from rabbit antiserum by affinity-chromatography using epitope-specific immunogen and the purity is > 95% (by SDS-PAGE).
Suggested Dilutions	WB: 1:500-1:1000 IHC: 1:50-1:200 IF: 1:50-1:200

Anti-Cyclin A (W250) CCNA1 Antibody (A03889-3) Images



Western blot (WB) analysis of Cyclin A (W250) pAb at 1:500 dilution Lane1:K562 whole cell lysate(40ug) Lane2:SGC7901 whole cell lysate(40ug) Lane3:The Testis tissue lysate of Mouse(40ug) Lane4:The Testis tissue lysate of Rat(40ug)



Immunohistochemistry (IHC) analyzes of Cyclin A (W250) pAb in paraffin-embedded human breast carcinoma tissue at 1:100.

1 Publications Citing This Product

1. PubMed ID: -, Chaowei Hu, Kun Zuo, Kuibao Li, Yuanfeng Gao, Mulei Chen, Roumu Hu, Ye Liu, Hongjie Chi, Hongjiang Wang, Yanwen Qin, Xiaoyan Liu, Jiuchang Zhong, Jun Cai, Xinchun Yang, Jing Li, "p38/JNK Is Required for the Proliferation and Phenotype Changes of Vascular Smooth Muscle

Visit bosterbio.com/anti-cyclin-a-w250-ccna1-antibody-a03889-3-boster.html to see all 1 publications.

Submit a product review to Biocompare.com

Submit a review of this product to Biocompare.com to receive a \$20 Amazon.com giftcard! Your reviews help your fellow scientists make the right decisions. Thank you for your contribution.



Anti-Cyclin A (W250) CCNA1 Antibody

For Research Use Only. Not for use in diagnostic procedures.