

Anti-Aldolase B (W148) ALDOB Antibody

Catalog Number: A03893-1

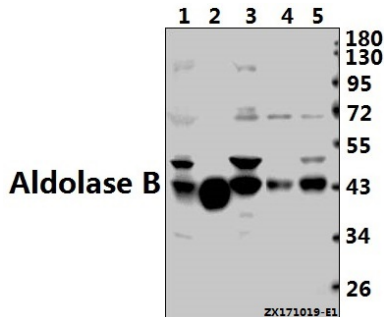
Overview

Product Name	Anti-Aldolase B (W148) ALDOB Antibody
Reactive Species	Human, Mouse, Rat
Description	Boster Bio Anti-Aldolase B (W148) ALDOB Antibody catalog # A03893-1. Tested in WB,IHC applications. This antibody reacts with Human,Mouse,Rat.
Application	IHC, WB
Clonality	Polyclonal
Formulation	Rabbit IgG, 1mg/ml in PBS with 0.02% sodium azide, 50% glycerol, pH7.2
Storage Instructions	Store at -20°C for one year. For short term storage and frequent use, store at 4°C for up to one month. Avoid repeated freeze-thaw cycles.
Host	Rabbit
Uniprot ID	P05062

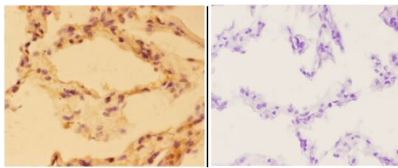
Technical Details

Immunogen	Synthetic peptide, corresponding to amino acids 121-170 of Human Aldolase B.
Isotype	IgG
Form	Liquid
Concentration	1 mg/ml
Purification	The antibody was affinity-purified from rabbit antiserum by affinity-chromatography using epitope-specific immunogen and the purity is > 95% (by SDS-PAGE).
Suggested Dilutions	WB: 1:500-1:2000 IHC: 1:50-1:200

Anti-Aldolase B (W148) ALDOB Antibody (A03893-1) Images



Western blot (WB) analysis of Aldolase B (W148) pAb at 1:2000 dilution Lane1:AML-12 whole cell lysate(40ug) Lane2:The Kidney tissue lysate of Rat(10ug) Lane3:HepG2 whole cell lysate(40ug) Lane4:HEK293T whole cell lysate(20ug) Lane5:SGC7901 whole cell lysate(20ug)



Immunohistochemistry (IHC) analyzes of Aldolase B (W148) pAb in paraffin-embedded human lung carcinoma tissue at 1:50, showing cytoplasmic and nuclear staining. Negative control (the right) Using PBS instead of primary antibody, secondary antibody is Goat Anti-Rabbit IgG-biotin followed by avidin-peroxidase.

Submit a product review to [Biocompare.com](https://www.biocompare.com)

Submit a review of this product to [Biocompare.com](https://www.biocompare.com) to receive a \$20 Amazon.com giftcard! Your reviews help your fellow scientists make the right decisions. Thank you for your contribution.



Anti-Aldolase B (W148) ALDOB Antibody

For Research Use Only. Not for use in diagnostic procedures.