

Anti-Laminin Beta 1 LAMB1 Antibody

Catalog Number: A03894-2

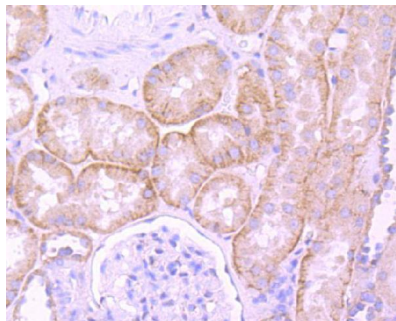
Overview

Product Name	Anti-Laminin Beta 1 LAMB1 Antibody
Reactive Species	Human, Mouse, Rat
Description	Boster Bio Anti-Laminin Beta 1 LAMB1 Antibody catalog # A03894-2. Tested in WB,IHC,Flow Cytometry applications. This antibody reacts with Human,Mouse,Rat.
Application	Flow Cytometry, IHC, WB
Clonality	Polyclonal
Formulation	Rabbit IgG, 1mg/ml in PBS with 0.02% sodium azide, 50% glycerol, pH7.2
Storage Instructions	Store at -20°C for one year. For short term storage and frequent use, store at 4°C for up to one month. Avoid repeated freeze-thaw cycles.
Host	Rabbit
Uniprot ID	P07942

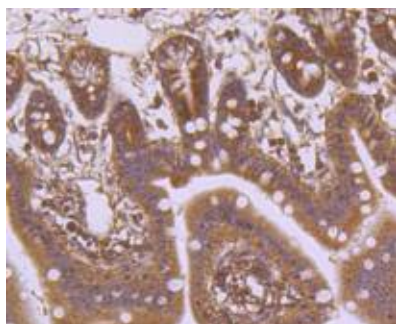
Technical Details

Immunogen	recombinant protein
Isotype	IgG
Form	Liquid
Concentration	1 mg/ml
Purification	ProA affinity purified
Suggested Dilutions	WB: 1:1,000 FC: 1:50-1:100 IHC: 1:100-1:500

Anti-Laminin Beta 1 LAMB1 Antibody (A03894-2) Images



Immunohistochemical analysis of paraffin-embedded human kidney tissue using anti-Laminin beta 1 antibody. Counter stained with hematoxylin.



Immunohistochemical analysis of paraffin-embedded mouse colon tissue using anti-Laminin beta 1 antibody. Counter stained with hematoxylin.

1 Publications Citing This Product

1. PubMed ID: -, Na,L.,Q.B.,Xiumei,Z.et al.Research into the intervention effect of folic acid on arsenic-induced heart abnormalities in fetal rats during the periconception period.BMC Cardiovasc Disord 20, 139 (2020).<https://doi.org/10.1186/s12872-020-01418-z>

Visit bosterbio.com/anti-laminin-beta-1-lamb1-antibody-a03894-2-boster.html to see all 1 publications.

Submit a product review to Biocompare.com

Submit a review of this product to Biocompare.com to receive a \$20 Amazon.com giftcard! Your reviews help your fellow scientists make the right decisions. Thank you for your contribution.



Anti-Laminin Beta 1 LAMB1 Antibody

For Research Use Only. Not for use in diagnostic procedures.