

## Anti-HBO1 (S167) KAT7 Antibody

Catalog Number: A03896S167

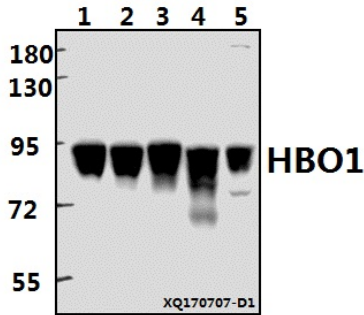
### Overview

Product Name	Anti-HBO1 (S167) KAT7 Antibody
Reactive Species	Human, Mouse, Rat
Description	Boster Bio Anti-HBO1 (S167) KAT7 Antibody catalog # A03896S167. Tested in WB,IF,IP applications. This antibody reacts with Human,Mouse,Rat.
Application	IP, IF, WB
Clonality	Polyclonal
Formulation	Rabbit IgG, 1mg/ml in PBS with 0.02% sodium azide, 50% glycerol, pH7.2
Storage Instructions	Store at -20°C for one year. For short term storage and frequent use, store at 4°C for up to one month. Avoid repeated freeze-thaw cycles.
Host	Rabbit
Uniprot ID	O95251

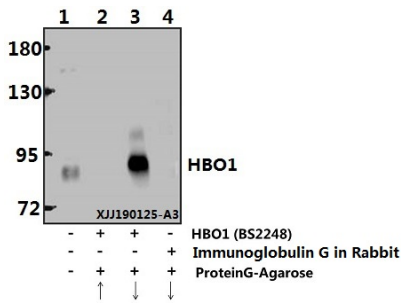
### Technical Details

Immunogen	Synthetic peptide, corresponding to amino acids 141-190 of Human HBO1.
Isotype	IgG
Form	Liquid
Concentration	1 mg/ml
Purification	The antibody was affinity-purified from rabbit antiserum by affinity-chromatography using epitope-specific immunogen and the purity is > 95% (by SDS-PAGE).
Suggested Dilutions	WB: 1:500-1:1000 IF: 1:50-1:200 IP: 1:10-1:100

## Anti-HBO1 (S167) KAT7 Antibody (A03896S167) Images



Western blot (WB) analysis of HBO1 (S167) polyclonal antibody at 1:500 dilution Lane1:HepG2 whole cell lysate(40ug) Lane2:A549 whole cell lysate(40ug) Lane3:HEK293T whole cell lysate(40ug) Lane4:PC12 whole cell lysate(40ug) Lane5:AML-12 whole cell lysate(40ug)



Immunoprecipitation of HEK293T cell lysate using HBO1 (S167) polyclonal antibody (Sepharose Bead Conjugate) #BD0048(lane 2 and lane 3) and Nonspecific IgG Control (Sepharose Bead Conjugate) #BD0048 (lane 4 ).Lane 1 is 30% input.The western blot was probed using HBO1 (S167) #BS2248."↑"supernatant;"↓(deposition)

### Submit a product review to Biocompare.com

Submit a review of this product to Biocompare.com to receive a \$20 Amazon.com giftcard! Your reviews help your fellow scientists make the right decisions. Thank you for your contribution.



Anti-HBO1 (S167) KAT7 Antibody

For Research Use Only. Not for use in diagnostic procedures.