

## Anti-14-3-3 Theta / Tau (phospho-S232) YWHAQ Antibody

Catalog Number: A03904S232

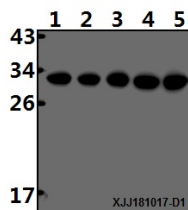
### Overview

Product Name	Anti-14-3-3 Theta / Tau (phospho-S232) YWHAQ Antibody
Reactive Species	Human, Mouse, Rat
Description	Boster Bio Anti-14-3-3 Theta / Tau (phospho-S232) YWHAQ Antibody catalog # A03904S232. Tested in WB applications. This antibody reacts with Human,Mouse,Rat.
Application	WB
Clonality	Polyclonal
Formulation	Rabbit IgG, 1mg/ml in PBS with 0.02% sodium azide, 50% glycerol, pH7.2
Storage Instructions	Store at -20°C for one year. For short term storage and frequent use, store at 4°C for up to one month. Avoid repeated freeze-thaw cycles.
Host	Rabbit
Uniprot ID	P27348

### Technical Details

Immunogen	Synthetic phosphopeptide derived from human 14-3-3 theta/tau around the phosphorylation site of Serine 232
Isotype	IgG
Form	Liquid
Concentration	1 mg/ml
Purification	The antibody was affinity-purified from rabbit antiserum by affinity-chromatography using epitope-specific immunogen and the purity is > 97% (by SDS-PAGE).
Suggested Dilutions	WB: 1:500-1:1000

## Anti-14-3-3 Theta / Tau (phospho-S232) YWHAQ Antibody (A03904S232) Images



p-14-3-3 0/τ (S232)

Western blot (WB) analysis of 14-3-3 theta/tau (phospho-S232) polyclonal antibody at 1:500 dilution Lane1:A549 whole cell lysate(40μg) Lane2:Hela whole cell lysate(40μg) Lane3:The Brain tissue lysate of Rat(40μg) Lane4:HEK293T whole cell lysate(40μg) Lane5:CT-26 whole cell lysate(40μg)

### Submit a product review to Biocompare.com

Submit a review of this product to Biocompare.com to receive a \$20 Amazon.com giftcard! Your reviews help your fellow scientists make the right decisions. Thank you for your contribution.



Anti-14-3-3 Theta / Tau (phospho-S232) YWHAQ Antibody

For Research Use Only. Not for use in diagnostic procedures.