

Anti-Phospho-14-3-3 theta/tau (S232) YWHAQ Antibody

Catalog Number: A03904S232-1

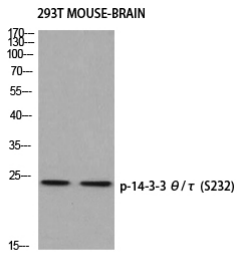
Overview

Product Name	Anti-Phospho-14-3-3 theta/tau (S232) YWHAQ Antibody
Reactive Species	Human, Mouse, Rat
Description	Boster Bio Anti-Phospho-14-3-3 theta/tau (S232) YWHAQ Antibody catalog # A03904S232-1. Tested in WB, IHC, IF, ELISA applications. This antibody reacts with Human, Mouse, Rat.
Application	ELISA, IF, IHC, WB
Clonality	Polyclonal
Formulation	Liquid in PBS containing 50% glycerol, 0.5% stabilizing protein and 0.02% sodium azide. *This antibody is supplied in a stabilized formulation. Compatibility with conjugation reactions depends on the chemistry of the conjugation method used. For conjugation methods that are not compatible with the stabilizing components present in this formulation, a carrier-free antibody format is required.
Storage Instructions	Store at -20°C for one year. For short term storage and frequent use, store at 4°C for up to one month. Avoid repeated freeze-thaw cycles.
Host	Rabbit
Uniprot ID	P27348

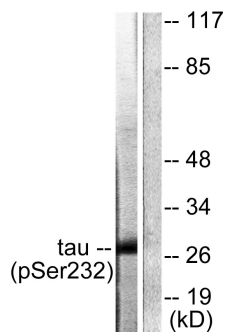
Technical Details

Immunogen	The antiserum was produced against synthesized peptide derived from human 14-3-3 thet/tau around the phosphorylation site of Ser232. AA range:196-245
Isotype	IgG
Form	Liquid
Concentration	1 mg/ml
Purification	The antibody was affinity-purified from rabbit antiserum by affinity-chromatography using epitope-specific immunogen.
Suggested Dilutions	WB 1:500-1:2000 IHC 1:100-1:300 IF 1:200-1:1000 ELISA 1:5000

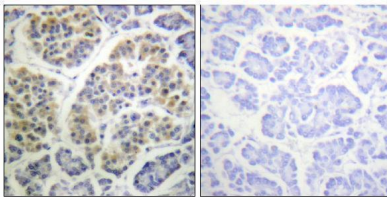
Anti-Phospho-14-3-3 theta/tau (S232) YWHAQ Antibody (A03904S232-1) Images



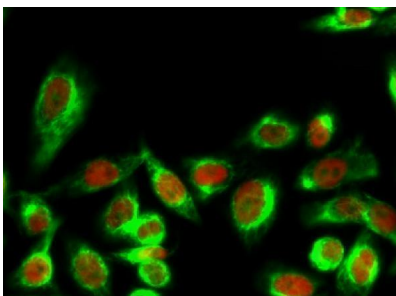
Western blot analysis of 293T MOUSE-BRAIN using p-14-3-3 theta/tau (S232) antibody. Antibody was diluted at 1:500



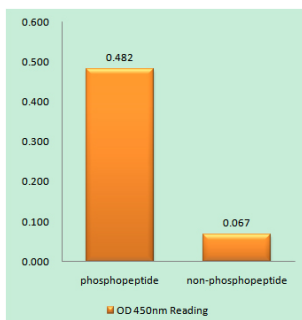
Western blot analysis of lysates from HeLa cells, using 14-3-3 theta/tau (Phospho-Ser232) Antibody. The lane on the right is blocked with the phospho peptide.



Immunohistochemistry analysis of paraffin-embedded human pancreas, using 14-3-3 theta/tau (Phospho-Ser232) Antibody. The picture on the right is blocked with the phospho peptide.



Immunofluorescence analysis of HeLa cell. 1, 14-3-3 theta/tau (phospho Ser232) Polyclonal Antibody (green) was diluted at 1:200 (4° overnight). (red) was diluted at 1:200 (4° overnight). 2, Goat Anti Rabbit Alexa Fluor 488 was diluted at 1:1000 (room temperature, 50min). Goat Anti Mouse Alexa Fluor 594 was diluted at 1:1000 (room temperature, 50min).



Enzyme-Linked Immunosorbent Assay (Phospho-ELISA) for Immunogen Phosphopeptide (Phospho-left) and Non-Phosphopeptide (Phospho-right), using 14-3-3 theta/tau (Phospho-Ser232) Antibody

Submit a product review to Biocompare.com

Submit a review of this product to Biocompare.com to receive a \$20 Amazon.com giftcard! Your reviews help your fellow scientists make the right decisions. Thank you for your contribution.



Anti-Phospho-14-3-3 theta/tau (S232) YWHAQ Antibody

For Research Use Only. Not for use in diagnostic procedures.