

Anti-Cd6 Antibody

Catalog Number: A03913-2

About Cd6

CD6 (Cluster of Differentiation 6) is a human protein encoded by the CD6 gene. This gene encodes a protein found on the outer membrane of T-lymphocytes as well as some other immune cells. The encoded protein contains three scavenger receptor cysteine-rich (SRCR) domains and a binding site for an activated leukocyte cell adhesion molecule. The gene product is important for continuation of T cell activation. This gene may be associated with susceptibility to multiple sclerosis. Multiple transcript variants encoding different isoforms have been found for this gene.

Overview

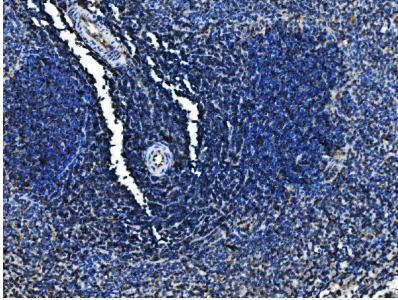
Product Name	Anti-Cd6 Antibody
Reactive Species	Rat
Description	Boster Bio Anti-Cd6 Antibody catalog # A03913-2. Tested in ELISA, IHC applications. This antibody reacts with Rat.
Application	ELISA, IHC
Clonality	Polyclonal
Formulation	Each vial contains 4 mg Trehalose, 0.9 mg NaCl, 0.2 mg Na ₂ HPO ₄ .
Storage Instructions	At -20°C for one year from date of receipt. After reconstitution, at 4°C for one month. It can also be aliquotted and stored frozen at -20°C for six months. Avoid repeated freezing and thawing.
Host	Rabbit
Uniprot ID	Q812A4

Technical Details

Immunogen	E.coli-derived rat Cd6 recombinant protein (Position: S52-Q395).
Recommended Detection Systems	Boster recommends HRP Conjugated anti-Rabbit IgG Super Vision Assay Kit (SV0002-1) for IHC(P).
Cross Reactivity	No cross-reactivity with other proteins.
Isotype	Rabbit IgG
Form	Lyophilized
Concentration	Adding 0.2 ml of distilled water will yield a concentration of 500 ug/ml.
Purification	Immunogen affinity purified.
Suggested Dilutions	Immunohistochemistry(Paraffin-embedded Section), 2-5 ug/ml, Rat ELISA, 0.1-0.5 ug/ml, Rat

--	--

Anti-Cd6 Antibody (A03913-2) Images



IHC analysis of Cd6 using anti-Cd6 antibody (A03913-2). Cd6 was detected in a paraffin-embedded section of rat spleen tissue. Heat mediated antigen retrieval was performed in EDTA buffer (pH 8.0, epitope retrieval solution). The tissue section was blocked with 10% goat serum. The tissue section was then incubated with 2 ug/ml rabbit anti-Cd6 Antibody (A03913-2) overnight at 4°C. Peroxidase Conjugated Goat Anti-rabbit IgG was used as secondary antibody and incubated for 30 minutes at 37°C. The tissue section was developed using HRP Conjugated Rabbit IgG Super Vision Assay Kit (Catalog # SV0002) with DAB as the chromogen.

Submit a product review to Biocompare.com

Submit a review of this product to Biocompare.com to receive a \$20 Amazon.com giftcard! Your reviews help your fellow scientists make the right decisions. Thank you for your contribution.



Anti-Cd6 Antibody

For Research Use Only. Not for use in diagnostic procedures.