

Anti-RABEX5 RABGEF1 Antibody

Catalog Number: A03937

About RABGEF1

RABEX5 is a guanine nucleotide exchange factor (GEF) that forms a complex with rabaptin-5 and specifically activates Rab5, a small GTPase that plays an essential role in endocytic traffic. RABEX-5 is thought to also interact with another member of the Rab family, Rab22, which targets RABEX5 to early endosomes, allowing it to activate Rab5 and thereby promote Rab5-mediated endosome fusion.

Overview

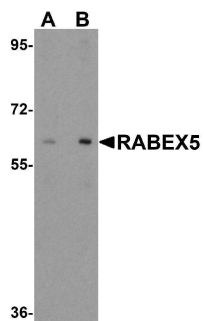
Product Name	Anti-RABEX5 RABGEF1 Antibody
Reactive Species	Human, Mouse, Rat
Description	Boster Bio Anti-RABEX5 RABGEF1 Antibody (Catalog # A03937). Tested in ELISA, WB, IHC-P, IF applications. This antibody reacts with Human, Mouse, Rat.
Application	ELISA, IF, IHC-P, WB
Clonality	Polyclonal
Formulation	RABEX5 Antibody is supplied in PBS containing 0.02% sodium azide.
Storage Instructions	RABEX5 antibody can be stored at 4°C for three months and -20°C, stable for up to one year. Avoid repeated freeze-thaw cycles. Antibodies should not be exposed to prolonged high temperatures.
Host	Rabbit
Uniprot ID	Q9UJ41

Technical Details

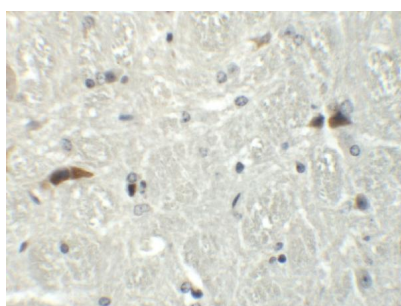
Immunogen	RABEX5 antibody was raised against a 19 amino acid synthetic peptide near the center terminus of human RABEX5. The immunogen is located within amino acids 430 - 480 of RABEX5.
Predicted Reactive Species	Bovine
Cross Reactivity	At least four isoforms of RABEX5 are known to exist; this antibody will recognize all four. RABEX5 antibody is predicted to not cross-react with other LRRFIP family members.
Isotype	IgG
Form	Liquid
Concentration	1 mg/mL
Purification	RABEX5 Antibody is affinity chromatography purified via peptide column.
Suggested Dilutions	RABEX5 antibody can be used for detection of RABEX5 by Western blot at 1 ug/mL. Antibody can

also be used for immunohistochemistry starting at 5 ug/mL. For immunofluorescence start at 20 ug/mL.
Antibody validated: Western Blot in human samples; Immunohistochemistry in mouse samples and Immunofluorescence in mouse samples. All other applications and species not yet tested. Optimal dilutions for each application should be determined by the researcher.

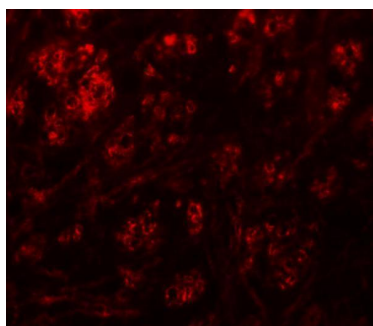
Anti-RABEX5 RABGEF1 Antibody (A03937) Images



Western blot analysis of RABEX5 in human liver tissue lysate with RABEX5 antibody at (A) 1 and (B) 2 ug/mL.



Immunohistochemistry of RABEX5 in mouse brain tissue with RABEX5 antibody at 5 ug/mL.



Immunofluorescence of RABEX5 in mouse brain tissue with RABEX5 antibody at 20 ug/mL.

Submit a product review to [Biocompare.com](https://www.biocompare.com)

Submit a review of this product to [Biocompare.com](https://www.biocompare.com) to receive a \$20 Amazon.com giftcard! Your reviews help your fellow scientists make the right decisions. Thank you for your contribution.



Anti-RABEX5 RABGEF1 Antibody

For Research Use Only. Not for use in diagnostic procedures.