

Anti-RILP Antibody

Catalog Number: A03940

About RILP

The Rab interacting lysosomal protein (RILP) is lysosomal protein that interacts with RAB7, a small GTPase that controls transport to endocytic degradative compartments. It is thought that RILP is a downstream effector of RAB7 and both proteins act together in the regulation of late endocytic traffic. Overexpression of RILP caused enlarged lysosomes that are more centrally located in the cell suggesting that RILP may also be involved in the regulation of lysosomal morphology. Other evidence suggests that RILP may play a role in the biogenesis of multivesicular bodies.

Overview

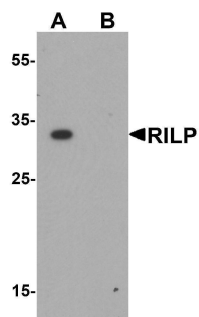
Product Name	Anti-RILP Antibody
Reactive Species	Human, Mouse
Description	Boster Bio Anti-RILP Antibody (Catalog # A03940). Tested in ELISA, WB, ICC, IF applications. This antibody reacts with Human, Mouse.
Application	ELISA, IF, ICC, WB
Clonality	Polyclonal
Formulation	RILP Antibody is supplied in PBS containing 0.02% sodium azide.
Storage Instructions	RILP antibody can be stored at 4°C for three months and -20°C, stable for up to one year. Avoid repeated freeze-thaw cycles. Antibodies should not be exposed to prolonged high temperatures.
Host	Rabbit
Uniprot ID	Q96NA2

Technical Details

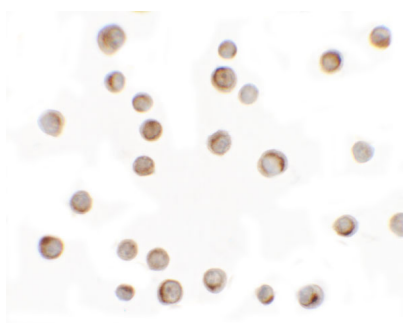
Immunogen	RILP antibody was raised against an 18 amino acid synthetic peptide near the center of human RILP. The immunogen is located within amino acids 110 - 160 of RILP.
Predicted Reactive Species	Bovine
Isotype	IgG
Form	Liquid
Concentration	1 mg/mL
Purification	RILP Antibody is affinity chromatography purified via peptide column.
Suggested Dilutions	RILP antibody can be used for detection of RILP by Western blot at 1 ug/mL. Antibody can also be used for immunocytochemistry starting at 2.5 ug/mL. For immunofluorescence start at 2.5 ug/mL. Antibody validated: Western Blot in mouse samples; Immunocytochemistry in human samples and

Immunofluorescence in human samples. All other applications and species not yet tested. Optimal dilutions for each application should be determined by the researcher.

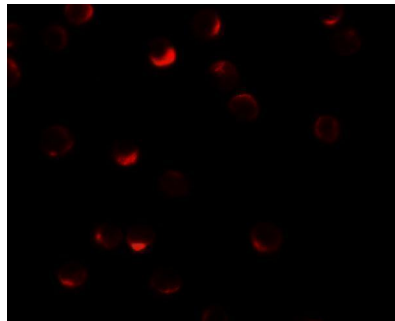
Anti-RILP Antibody (A03940) Images



Western blot analysis of RILP in A20 cell lysate with RILP antibody at 1 ug/mL.



Immunocytochemistry of RILP in HeLa cells with RILP antibody at 2.5 ug/mL.



Immunofluorescence of RILP in HeLa cells with RILP antibody at 20 ug/mL.

Submit a product review to [Biocompare.com](https://www.biocompare.com)

Submit a review of this product to [Biocompare.com](https://www.biocompare.com) to receive a \$20 Amazon.com giftcard! Your reviews help your fellow scientists make the right decisions. Thank you for your contribution.



Anti-RILP Antibody

For Research Use Only. Not for use in diagnostic procedures.