

Anti-SYT SS18 Antibody

Catalog Number: A03947

About SS18

Transcriptional repressor which binds neuron-restrictive silencer element (NRSE) and represses neuronal gene transcription in non-neuronal cells. Restricts the expression of neuronal genes by associating with two distinct corepressors, mSin3 and CoREST, which in turn recruit histone deacetylase to the promoters of REST-regulated genes. Mediates repression by recruiting the BHC complex at RE1/NRSE sites which acts by deacetylating and demethylating specific sites on histones, thereby acting as a chromatin modifier.

Chong J.A.et.al. (1995)Cell 80:949-957

Schoenherr C.J.et.al.(1995)Science 267:1360-1363

Scholl T.et.al.(1996)J. Immunol. 156:1448-1457

Lunyak V.V.et.al. (2002)Science 298:1747-1752

Overview

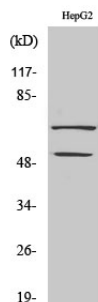
Product Name	Anti-SYT SS18 Antibody
Reactive Species	Human, Mouse, Rat
Description	Boster Bio Anti-SYT SS18 Antibody catalog # A03947. Tested in WB applications. This antibody reacts with Human, Mouse, Rat.
Application	WB
Clonality	Polyclonal 9G7F12; 7G6D7
Formulation	Liquid in PBS containing 50% glycerol, 0.5% BSA and 0.02% sodium azide.
Storage Instructions	Store at -20°C for one year. For short term storage and frequent use, store at 4°C for up to one month. Avoid repeated freeze-thaw cycles.
Host	Rabbit
Uniprot ID	Q15532

Technical Details

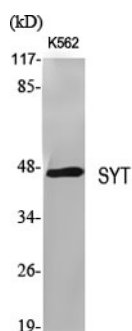
Immunogen	Synthesized peptide derived from the N-terminal region of human SYT. at AA range: 1-80
Predicted Reactive Species	Bovine, Canine, Equine, Guinea Pig, Rabbit, Sheep, Yeast, Zebrafish
Isotype	IgG
Form	Liquid
Concentration	This antibody's concentration is >0.5mg/ml.

Purification	Immunogen affinity purified
Suggested Dilutions	<p>Dilute the sample so that the expected range of concentrations fall within the detection range of this kit.</p> <p>If the expected range of concentration is unknown, a pilot test should be conducted to decide the optimal dilution ratio for your samples.</p> <p>Some PubMed article(s) citing the expression level of this target are as follows:</p> <p>Boster Bio's internal QC testing used:</p> <p>WB, 1:500-1:2000</p>

Anti-SYT SS18 Antibody (A03947) Images



Western Blot (WB) analysis of COLO205 cells using SYT Polyclonal antibody.



Western Blot (WB) analysis of specific cells using SYT Polyclonal antibody.

Submit a product review to Biocompare.com

Submit a review of this product to Biocompare.com to receive a \$20 Amazon.com giftcard! Your reviews help your fellow scientists make the right decisions. Thank you for your contribution.



Anti-SYT SS18 Antibody