

Anti-AMHR2 Antibody

Catalog Number: A03970

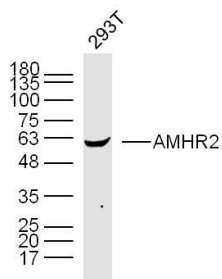
Overview

Product Name	Anti-AMHR2 Antibody
Reactive Species	Human
Description	Boster Bio Anti-AMHR2 Antibody catalog # A03970. Tested in WB,ELISA applications. This antibody reacts with Human.
Application	ELISA, WB
Clonality	Polyclonal
Formulation	Rabbit IgG, 1mg/ml in PBS with 0.02% sodium azide, 50% glycerol, pH7.2
Storage Instructions	Store at -20°C for one year. For short term storage and frequent use, store at 4°C for up to one month. Avoid repeated freeze-thaw cycles.
Host	Rabbit
Uniprot ID	Q16671

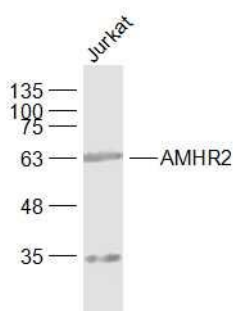
Technical Details

Immunogen	KLH conjugated synthetic peptide derived from human MISRII/AMHR2: 21-120/573
Isotype	IgG
Form	Liquid
Concentration	1 mg/ml
Purification	The antibody was affinity-purified from rabbit antiserum by affinity-chromatography using epitope-specific immunogen and the purity is > 95% (by SDS-PAGE).
Suggested Dilutions	WB 1:500-1:2000 ELISA 1:5000-1:10000

Anti-AMHR2 Antibody (A03970) Images



Anti- AMHR2 at 1:300 dilution.



Anti- AMHR2 at 1:1000 dilution.

Submit a product review to [Biocompare.com](https://www.biocompare.com)

Submit a review of this product to [Biocompare.com](https://www.biocompare.com) to receive a \$20 Amazon.com giftcard! Your reviews help your fellow scientists make the right decisions. Thank you for your contribution.



Anti-AMHR2 Antibody

For Research Use Only. Not for use in diagnostic procedures.