

## Anti-ADP/ATP translocase 1 SLC25A4 Antibody

Catalog Number: A03976

### Overview

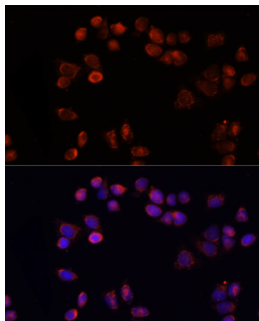
Product Name	Anti-ADP/ATP translocase 1 SLC25A4 Antibody
Reactive Species	Human
Description	Boster Bio Anti-ADP/ATP translocase 1 SLC25A4 Antibody catalog # A03976. Tested in WB, ICC/IF applications. This antibody reacts with Human.
Application	IF, ICC, WB
Clonality	Polyclonal
Formulation	Rabbit IgG, 1mg/ml in PBS with 0.02% sodium azide, 50% glycerol, pH7.2
Storage Instructions	Store at -20°C for one year. For short term storage and frequent use, store at 4°C for up to one month. Avoid repeated freeze-thaw cycles.
Host	Rabbit
Uniprot ID	P12235

### Technical Details

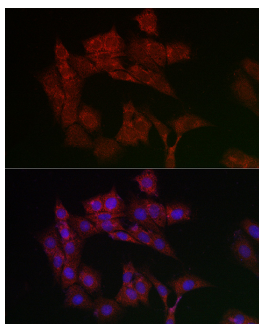
Immunogen	A synthetic peptide of human SLC25A4/ANT1(NP_001142.2).
Isotype	IgG
Form	Liquid
Concentration	1 mg/ml
Purification	The antibody was affinity-purified from rabbit antiserum by affinity-chromatography using epitope-specific immunogen and the purity is > 95% (by SDS-PAGE).
Suggested Dilutions	WB: 1:500-1:2000 ICC/IF: 1:50-1:200

## Anti-ADP/ATP translocase 1 SLC25A4 Antibody (A03976) Images

---



Immunofluorescence analysis of HeLa cells using SLC25A4/ANT1 antibody at dilution of 1:100 . Blue: DAPI for nuclear staining.



Immunofluorescence analysis of PC-12 cells using SLC25A4/ANT1 Rabbit pAb at dilution of 1:200 . Blue: DAPI for nuclear staining.

### Submit a product review to [Biocompare.com](https://www.biocompare.com)

---

Submit a review of this product to [Biocompare.com](https://www.biocompare.com) to receive a \$20 Amazon.com giftcard! Your reviews help your fellow scientists make the right decisions. Thank you for your contribution.



Anti-ADP/ATP translocase 1 SLC25A4 Antibody

For Research Use Only. Not for use in diagnostic procedures.