

Anti-SLAMF1 Antibody

Catalog Number: A03988

About SLAMF1

The signaling lymphocyte-activation molecule family member 1 (SLAMF1) is a novel receptor on T cells that potentiates T cell expansion in a CD28-independent manner. SLAMF1 is predominantly expressed by hematopoietic tissues. Reports suggest that the extracellular domain of SLAMF1 is the receptor for the measles virus and acts as a co-activator on both T and B cells. It is thought to interact with SH2D1A and with PTPN11 via its cytoplasmic domain. Mutations of the SLAM associated gene may be associated with X-linked lympho-proliferative disease (XLP).

Overview

Product Name	Anti-SLAMF1 Antibody
Reactive Species	Human, Mouse, Rat
Description	Boster Bio Anti-SLAMF1 Antibody (Catalog # A03988). Tested in ELISA, WB, IHC-P, IF applications. This antibody reacts with Human, Mouse, Rat.
Application	ELISA, IF, IHC-P, WB
Clonality	Polyclonal
Formulation	SLAMF1 Antibody is supplied in PBS containing 0.02% sodium azide.
Storage Instructions	SLAMF1 antibody can be stored at 4°C up to one year. Antibodies should not be exposed to prolonged high temperatures.
Host	Rabbit
Uniprot ID	Q13291

Technical Details

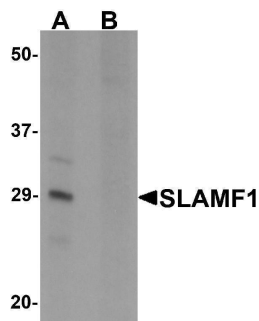
Immunogen	SLAMF1 antibody was raised against a 15 amino acid synthetic peptide near the amino terminus of human SLAMF1. The immunogen is located within amino acids 30 - 80 of SLAMF1.
Predicted Reactive Species	Mouse
Cross Reactivity	4 isoforms of SLAMF1 are known to exist; this antibody will be predicted to recognize all 4 isoforms. SLAMF1 antibody is predicted to not cross-react with other SLAM protein family members.
Isotype	IgG
Form	Liquid
Concentration	1 mg/mL
Purification	SLAMF1 Antibody is affinity chromatography purified via peptide column.

Suggested Dilutions

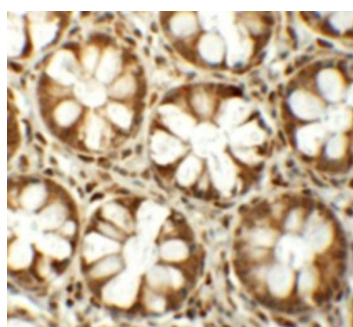
SLAMF1 antibody can be used for detection of SLAMF1 by Western blot at 1 ug/mL. Antibody can also be used for immunohistochemistry starting at 5 ug/mL. For immunofluorescence start at 20 ug/mL.

Antibody validated: Western Blot in rat samples; Immunohistochemistry in human samples and Immunofluorescence in human samples. All other applications and species not yet tested. Optimal dilutions for each application should be determined by the researcher.

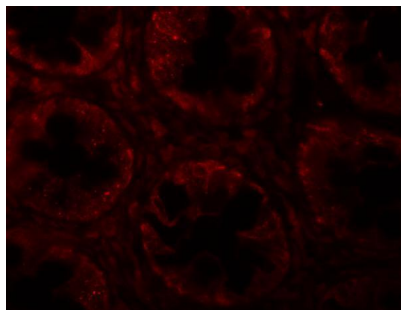
Anti-SLAMF1 Antibody (A03988) Images



Western blot analysis of SLAMF1 in rat colon tissue lysate with SLAMF1 antibody at 1 ug/mL in (A) the absence and (B) the presence of blocking peptide.



Immunohistochemistry of SLAMF1 in human colon tissue with SLAMF1 antibody at 5 ug/mL.



Immunofluorescence of SLAMF1 in human colon tissue with SLAMF1 antibody at 20 ug/mL.

Submit a product review to [Biocompare.com](https://www.biocompare.com)

Submit a review of this product to [Biocompare.com](https://www.biocompare.com) to receive a \$20 Amazon.com giftcard! Your reviews help your fellow scientists make the right decisions. Thank you for your contribution.



Anti-SLAMF1 Antibody

For Research Use Only. Not for use in diagnostic procedures.