

## Anti-Alpha-tubulin TUBA1A Antibody (biotin)

Catalog Number: A03989-Biotin

### About TUBA1A

Alpha-tubulin belongs to the tubulin superfamily, which is composed of six distinct families. Along with beta-tubulins, alpha-tubulins are the major components of microtubules. These microtubules are involved in a wide variety of cellular activities ranging from mitosis and transport events to cell movement and the maintenance of cell shape. Alpha- and beta-tubulin dimers are assembled to 13 protofilaments that form a microtubule of 22-nm diameter (reviewed in 1). Tyrosine ligase adds a C-terminal tyrosine to monomeric alpha-tubulin. Assembled microtubules can again be detyrosinated by a cytoskeleton-associated carboxypeptidase (2). Another post-translational modification of detyrosinated alpha-tubulin is C-terminal polyglutamylation, which is characteristic of microtubules in neuronal cells and the mitotic spindle (3). Like GAPDH and  $\beta$ -Actin, this antibody makes an excellent loading control in immunoblots.

### Overview

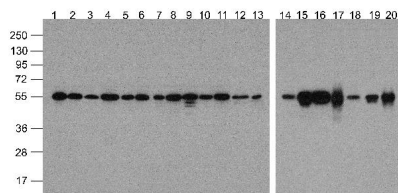
Product Name	Anti-Alpha-tubulin TUBA1A Antibody (biotin)
Reactive Species	Chicken, Human, Mouse, Rabbit, Rat, Zebrafish
Description	Boster Bio Anti-Alpha-tubulin TUBA1A Antibody (biotin) (Catalog # A03989-Biotin). Tested in ELISA, WB applications. This antibody reacts with Human, Mouse, Rat, Rabbit, Chicken, Zebrafish.
Application	ELISA, WB
Clonality	Polyclonal Clone: SK7
Formulation	Biotin-Alpha-tubulin antibody is supplied in PBS containing 1% BSA and 0.02% sodium azide.
Storage Instructions	Biotin-Alpha-tubulin antibody can be stored at 4°C for three months and -20°C, stable for up to one year.
Host	Rabbit
Uniprot ID	Q71U36

### Technical Details

Immunogen	Biotin-Alpha-tubulin antibody was raised against an 18 amino acid peptide near the carboxy terminus of human alpha-tubulin
Predicted Reactive Species	Mouse
Cross Reactivity	Biotin-Alpha-tubulin antibody is human, mouse, rat, rabbit, chicken, and zebrafish reactive.
Isotype	IgG
Form	Liquid
Concentration	1 mg/mL

Purification	Biotin-Alpha-tubulin antibody is affinity chromatography purified via peptide column.
Suggested Dilutions	<p>Dilute the sample so that the expected range of concentrations fall within the detection range of this kit.</p> <p>If the expected range of concentration is unknown, a pilot test should be conducted to decide the optimal dilution ratio for your samples.</p> <p>Some PubMed article(s) citing the expression level of this target are as follows:</p> <p>Boster Bio's internal QC testing used:</p> <p>Biotin-Alpha-tubulin antibody can be used for detection of alpha-tubulin by Western blot at 1 - 2 ug/ml.</p> <p>Antibody validated: Western Blot in human, mouse, and rat samples. All other applications and species not yet tested. Optimal dilutions for each application should be determined by the researcher.</p>

## Anti-Alpha-tubulin TUBA1A Antibody (biotin) (A03989-Biotin) Images



Western blot analysis of Alpha-tubulin in multiple cell and tissue lysates with Biotin-Alpha-tubulin antibody at 1 ug/ml.  
Lanes 1-20: 293

### Submit a product review to Biocompare.com

Submit a review of this product to Biocompare.com to receive a \$20 Amazon.com giftcard! Your reviews help your fellow scientists make the right decisions. Thank you for your contribution.



Anti-Alpha-tubulin TUBA1A Antibody (biotin)